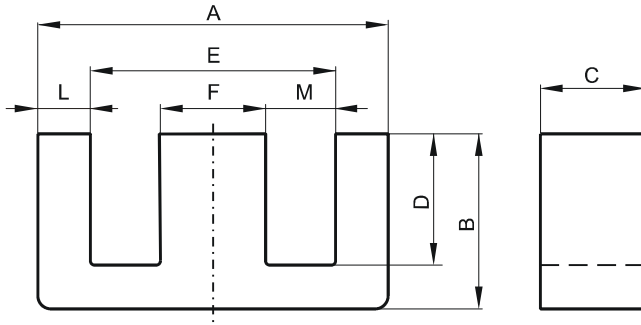


Specification for:

0R44721EC

110 Delta Drive
Pittsburgh, PA 15238
Phone: 412/696-1333
Fax: 412/696-0333
Email: magnetics@spang.com

DIMENSIONS



(mm)	Nominal:	Tol. min.:	Tol. max.:
A	46.9	-0.8	+ 0.8
B	19.6	-0.2	+ 0.2
C	15.6	-0.25	+ 0.25
D	12.1 Min.		
E	32.4	-0.65	+ 0.65
F	15.6	-0.25	+ 0.25
L	7.54 Nom.		
M	7.87 Min.		
Eff. Parameters			
Ae mm²	Amin mm²	le mm	Ve mm³
234.0	226.0	88.9	20800

INDUCTANCE

AL value (nH)	Test conditions
Nom: 5360 Min.: 4020	10 kHz, < 0.5 mT, 25 °C

MARKING

0R44721EC PXXXXX

CORE LOSSES

P_i max	Test conditions
101 mW/cm ³ (2.1 W/set)	100 kHz, 100 mT, 100 °C
529 mW/cm ³ (11.0 W/set)	100 kHz, 200 mT, 100 °C

NOTE

Spec. modifications	Previous	Revised
2005-06-22	A=46.6 Min. A=47.6 Max. B=19.6 Min. C=15.47 Min. F=15.67±0.2 Losses: General R material	A=46.1 Min. A=47.7 Max. B=19.4 Min. C=15.35 Min. F=15.6±0.25 Losses: Detail as indicated