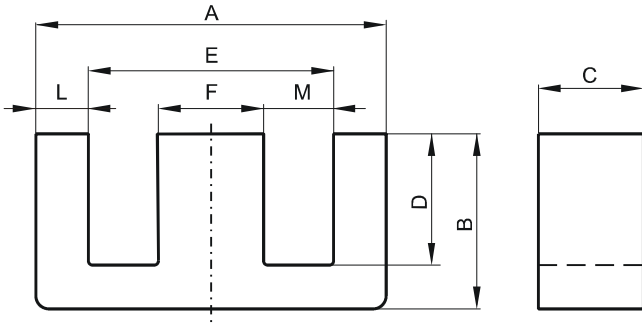


DIMENSIONS



(mm)	Nominal:	Tol. min.:	Tol. max.:
A	25.0	-0.7	+ 0.8
B	12.8	-0.4	0.0
C	7.5	-0.6	0.0
D	8.7	0.0	+ 0.6
E	17.5	0.0	+ 0.9
F	7.5	-0.5	0.0
L	0.0	0.0	0.0
M	0.0	0.0	0.0
Eff. Parameters			
Ae mm²	Amin mm²	le mm	Ve mm³
51.8	51.8	57.8	2990

INDUCTANCE

AL value (nH)	Test conditions
Nom: 1900 Min.: 1425	10 kHz, < 0.5 mT, 25 °C

MARKING

R EC

CORE LOSSES

P_i max	Test conditions
86 mW/cm ³ (0.25714 W/set)	100 kHz, 100 mT, 100 °C
530 mW/cm ³ (1.5847 W/set)	100 kHz, 200 mT, 100 °C