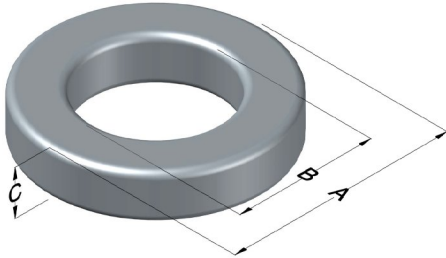




# C055040A2

110 Delta Drive  
 Pittsburgh, PA 15238  
 NAFTA Sales: (1)800-245-3984  
 HK Sales : (852)3102-9337  
 magnetics@spang.com  
 www.mag-inc.com



MPP Permeability ( $\mu$ )	$A_L$ (nH/T <sup>2</sup> )	Core Marking			Coating Color
		Lot Number	Part Number	Inductance Grade	
125	66 ± 8%	XXXXXX	040A2	X	Gray

Dimensions	Uncoated		Coated Limits			Packaging
	(mm)	(in)	(mm)	(in)		
OD (A)	10.2	0.400	10.8	0.425	max	Bulk Pack 4 bags/box Box Qty= 8000 pcs
ID (B)	5.08	0.200	4.57	0.180	min	
HT (C)	3.96	0.156	4.60	0.181	max	

Electrical Characteristics			Physical Characteristics						
Watt Loss @ 100 kHz, 100mT max(mW/cm <sup>3</sup> )	DC Bias min (A-T/cm)		Voltage Breakdown wire to wire min (V <sub>AC</sub> )	Break Strength min (kg)	Window Area W <sub>A</sub> (mm <sup>2</sup> )	Cross Section A <sub>e</sub> (mm <sup>2</sup> )	Path Length L <sub>e</sub> (mm)	Volume V <sub>e</sub> (mm <sup>3</sup> )	Weight (g)
	80%	50%							
950	19.8	38.5	1000	7.3	16.4	9.57	23.0	220	1.9

Winding Information					Temperature Rating	
Winding Length Per Turn				Wound Coil Dimensions (mm)		Curie Temp: 460°C
Winding Factor	(mm)	Winding Factor	(mm)	Maximum OD (70%)	14.1	Coating Temp (Continuous up to): 200°C
				Maximum HT (70%)	8.46	
0%	15.4	40%	17.8	Surface Area (mm <sup>2</sup> )		Notes:
20%	16.6	45%	18.1	Unwound Core		
25%	16.9	50%	18.4	40% Winding Factor		
30%	17.1	60%	19.2			
35%	17.5	70%	20.0			

