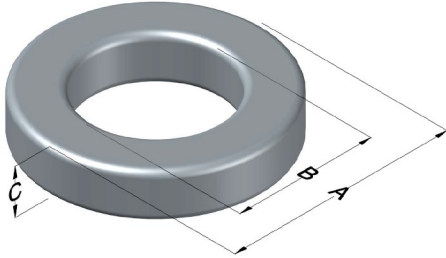




**0077040A7**

110 Delta Drive  
 Pittsburgh, PA 15238  
 NAFTA Sales: (1)800-245-3984  
 HK Sales : (852)3102-9337  
 magnetics@spang.com  
 www.mag-inc.com



Kool M $\mu$ Permeability ( $\mu$ )	A <sub>L</sub> (nH/T <sup>2</sup> )	Core Marking			Coating Color
		Lot Number	Part Number	Inductance Grade	
125	66 ± 12%	XXXXXX	040A7	N/A	Black

Dimensions	Uncoated		Coated Limits			Packaging
	(mm)	(in)	(mm)	(in)		
OD (A)	10.2	0.400	10.8	0.425	max	Bulk Pack 4 bags/box Box Qty= 8000 pcs
ID (B)	5.08	0.200	4.57	0.180	min	
HT (C)	3.96	0.156	4.60	0.181	max	

Electrical Characteristics			Physical Characteristics						
Watt Loss @ 100 kHz, 100mT max(mW/cm <sup>3</sup> )	DC Bias min (A·T/cm)		Voltage Breakdown wire to wire min (V <sub>AC</sub> )	Break Strength min (kg)	Window Area W <sub>A</sub> (mm <sup>2</sup> )	Cross Section A <sub>e</sub> (mm <sup>2</sup> )	Path Length L <sub>e</sub> (mm)	Volume V <sub>e</sub> (mm <sup>3</sup> )	Weight (g)
	1400	80%							
	10.7	27.8							

Winding Information				Temperature Rating	
Winding Length Per Turn				Wound Coil Dimensions (mm)	
Winding Factor	(mm)	Winding Factor	(mm)	Maximum OD (70%)	14.1
				Maximum HT (70%)	8.46
0%	15.4	40%	17.8	Surface Area (mm <sup>2</sup> )	
20%	16.6	45%	18.1		
25%	16.9	50%	18.4	Unwound Core	
30%	17.1	60%	19.2		
35%	17.5	70%	20.0	40% Winding Factor	
				510	
				Curie Temp: 500°C	
				Coating Temp (Continuous up to): 200°C	
Notes:					

