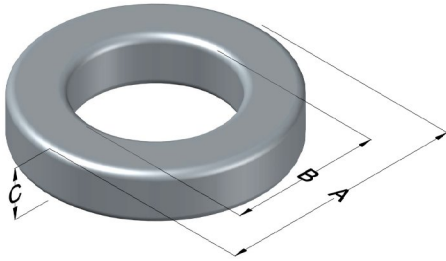




C058120A2

110 Delta Drive
 Pittsburgh, PA 15238
 NAFTA Sales: (1)800-245-3984
 HK Sales : (852)3102-9337
 magnetics@spang.com
 www.mag-inc.com



High Flux Permeability (μ)	A_L (nH/T ²)	Core Marking			Coating Color
		Lot Number	Part Number	Inductance Grade	
125	72 ± 8%	XXXXXX	58120A2	X	Khaki

Dimensions	Uncoated		Coated Limits			Packaging
	(mm)	(in)	(mm)	(in)		
OD (A)	16.6	0.653	17.3	0.680	max	Bulk Pack 4 bags/box Box Qty= 2000 pcs
ID (B)	10.2	0.400	9.52	0.375	min	
HT (C)	6.35	0.250	7.12	0.280	max	

Electrical Characteristics			Physical Characteristics						
Watt Loss @ 100 kHz, 100mT typical (mW/cm ³)	DC Bias typical (A·T/cm)		Voltage Breakdown wire to wire min (V _{AC})	Break Strength min (kg)	Window Area W _A (mm ²)	Cross Section A _e (mm ²)	Path Length L _e (mm)	Volume V _e (mm ³)	Weight (g)
	80%	50%							
1275	34.2	66.0	1000	14	71.2	19.2	41.2	791	6.3

Winding Information				Temperature Rating	
Winding Length Per Turn				Wound Coil Dimensions (mm)	
Winding Factor	(mm)	Winding Factor	(mm)	Curie Temp: 500°C	
				Coating Temp (Continuous up to): 200°C	
				Notes:	
				Maximum OD (70%)	23.7
				Maximum HT (70%)	15.2
				Surface Area (mm ²)	
				Unwound Core	922
				40% Winding Factor	1,360

