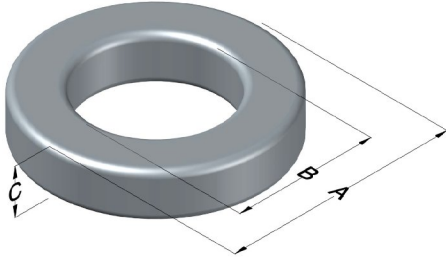




0077130A7

110 Delta Drive
 Pittsburgh, PA 15238
 NAFTA Sales: (1)800-245-3984
 HK Sales : (852)3102-9337
 magnetics@spang.com
 www.mag-inc.com



Kool M μ Permeability (μ)	A _L (nH/T ²)	Core Marking			Coating Color
		Lot Number	Part Number	Inductance Grade	
125	53 ± 12%	XXXXXX	130A7	N/A	Black

Dimensions	Uncoated		Coated Limits			Packaging
	(mm)	(in)	(mm)	(in)		
OD (A)	11.2	0.440	11.9	0.465	max	Bulk Pack 4 bags/box Box Qty= 6000 pcs
ID (B)	6.35	0.250	5.84	0.230	min	
HT (C)	3.96	0.156	4.60	0.181	max	

Electrical Characteristics			Physical Characteristics						
Watt Loss @ 100 kHz, 100mT max(mW/cm ³)	DC Bias min (A·T/cm)		Voltage Breakdown wire to wire min (V _{AC})	Break Strength min (kg)	Window Area W _A (mm ²)	Cross Section A _e (mm ²)	Path Length L _e (mm)	Volume V _e (mm ³)	Weight (g)
	1400	80%							
	10.7	27.8	1000	6.8	26.8	9.06	26.9	244	1.5

Winding Information					Temperature Rating	
Winding Length Per Turn				Wound Coil Dimensions (mm)		Curie Temp: 500°C
Winding Factor	(mm)	Winding Factor	(mm)	Maximum OD (70%)	15.7	Coating Temp (Continuous up to): 200°C
				Maximum HT (70%)	8.97	
0%	15.2	40%	18.1	Surface Area (mm ²)		Notes:
20%	16.7	45%	18.6	Unwound Core		
25%	17.0	50%	19.0	40% Winding Factor		
30%	17.4	60%	19.9			
35%	17.8	70%	20.9			

