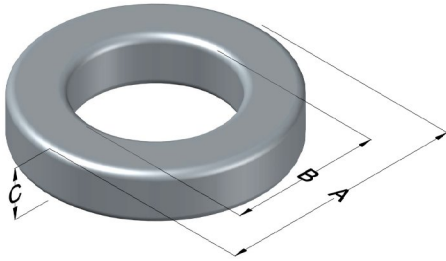




0077181A7

110 Delta Drive
 Pittsburgh, PA 15238
 NAFTA Sales: (1)800-245-3984
 HK Sales : (852)3102-9337
 magnetics@spang.com
 www.mag-inc.com



Kool M μ Permeability (μ)	A _L (nH/T ²)	Core Marking			Coating Color
		Lot Number	Part Number	Inductance Grade	
60	20 ± 15%	N/A	N/A	N/A	Black

Dimensions	Uncoated		Coated Limits			Packaging
	(mm)	(in)	(mm)	(in)		
OD (A)	4.65	0.183	5.29	0.208	max	Bulk Pack 10 vials/box Box Qty= 5000 pcs
ID (B)	2.36	0.093	1.85	0.073	min	
HT (C)	2.54	0.100	3.18	0.125	max	

Electrical Characteristics			Physical Characteristics						
Watt Loss @ 100 kHz, 100mT max(mW/cm ³)	DC Bias min (A·T/cm)		Voltage Breakdown wire to wire min (V _{AC})	Break Strength min (kg)	Window Area W _A (mm ²)	Cross Section A _e (mm ²)	Path Length L _e (mm)	Volume V _e (mm ³)	Weight (g)
	1000	80%							
	31.0	69.1							

Winding Information					Temperature Rating		
Winding Length Per Turn				Wound Coil Dimensions (mm)		Curie Temp: 500°C	
Winding Factor	(mm)	Winding Factor	(mm)	Maximum OD (70%)	6.65	Coating Temp (Continuous up to): 200°C	
				Maximum HT (70%)	4.94		
0%	9.79	40%	10.7	Surface Area (mm ²)		Notes: *No voltage breakdown min for A2 or A7 with OD ≤4.65mm	
20%	10.3	45%	10.9				
25%	10.4	50%	11.0	Unwound Core			111
30%	10.5	60%	11.3	40% Winding Factor			150
35%	10.6	70%	11.6				

