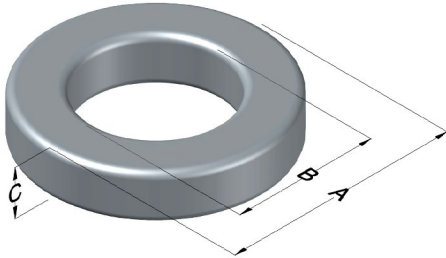




# C058206A2

110 Delta Drive  
 Pittsburgh, PA 15238  
 NAFTA Sales: (1)800-245-3984  
 HK Sales : (852)3102-9337  
 magnetics@spang.com  
 www.mag-inc.com



High Flux Permeability ( $\mu$ )	$A_L$ (nH/T <sup>2</sup> )	Core Marking			Coating Color
		Lot Number	Part Number	Inductance Grade	
125	68 ± 8%	XXXXXX	58206A2	X	Khaki

Dimensions	Uncoated		Coated Limits		Packaging
	(mm)	(in)	(mm)	(in)	
OD (A)	20.3	0.800	21.1	0.830	Bulk Pack 4 bags/box Box Qty= 1600 pcs
ID (B)	12.7	0.500	12.0	0.475	
HT (C)	6.35	0.250	7.12	0.280	

Electrical Characteristics			Physical Characteristics						
Watt Loss @ 100 kHz, 100mT typical (mW/cm <sup>3</sup> )	DC Bias typical (A-T/cm)		Voltage Breakdown wire to wire min (V <sub>AC</sub> )	Break Strength min (kg)	Window Area W <sub>A</sub> (mm <sup>2</sup> )	Cross Section A <sub>e</sub> (mm <sup>2</sup> )	Path Length L <sub>e</sub> (mm)	Volume V <sub>e</sub> (mm <sup>3</sup> )	Weight (g)
	80%	50%							
1275	34.2	66.0	1000	17	114	22.1	50.9	1,120	8.9

Winding Information				Temperature Rating	
Winding Length Per Turn				Curie Temp: 500°C	
Winding Factor	(mm)	Winding Factor	(mm)	Coating Temp (Continuous up to): 200°C	
				Notes:	
				Maximum OD (70%)	29.2
				Maximum HT (70%)	16.5
				Surface Area (mm <sup>2</sup> )	
				Unwound Core	1,210
				40% Winding Factor	1,890

## Typical DC Bias Performance

