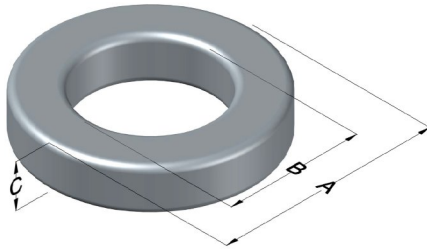




# C055380A2

110 Delta Drive  
 Pittsburgh, PA 15238  
 NAFTA Sales: (1)800-245-3984  
 HK Sales : (852)3102-9337  
 magnetics@spang.com  
 www.mag-inc.com



MPP Permeability ( $\mu$ )	$A_L$ (nH/T <sup>2</sup> )	Core Marking			Coating Color
		Lot Number	Part Number	Inductance Grade	
125	89 ± 8%	XXXXXX	55380A2	X	Gray

Dimensions	Uncoated		Coated Limits			Packaging
	(mm)	(in)	(mm)	(in)		
OD (A)	17.3	0.680	18.1	0.710	max	Bulk Pack 4 bags/box Box Qty= 2000 pcs
ID (B)	9.65	0.380	9.01	0.355	min	
HT (C)	6.35	0.250	7.12	0.280	max	

Electrical Characteristics			Physical Characteristics						
Watt Loss @ 100 kHz, 100mT max(mW/cm <sup>3</sup> )	DC Bias min (A-T/cm)		Voltage Breakdown wire to wire min (V <sub>AC</sub> )	Break Strength min (kg)	Window Area W <sub>A</sub> (mm <sup>2</sup> )	Cross Section A <sub>e</sub> (mm <sup>2</sup> )	Path Length L <sub>e</sub> (mm)	Volume V <sub>e</sub> (mm <sup>3</sup> )	Weight (g)
	80%	50%							
950	19.8	38.5	1000	17	63.8	23.2	41.4	960	8.2

Winding Information				Temperature Rating	
Winding Length Per Turn				Wound Coil Dimensions (mm)	
Winding Factor	(mm)	Winding Factor	(mm)	Curie Temp: 460 °C	
				Coating Temp (Continuous up to): 200 °C	
				Notes:	
0%	23.2	40%	28.0	Maximum OD (70%)	24.9
20%	25.6	45%	28.6	Maximum HT (70%)	16.3
25%	26.2	50%	29.3	Surface Area (mm <sup>2</sup> )	
30%	26.6	60%	30.8	Unwound Core	987
35%	27.4	70%	32.4	40% Winding Factor	1,470

## Typical DC Bias Performance

