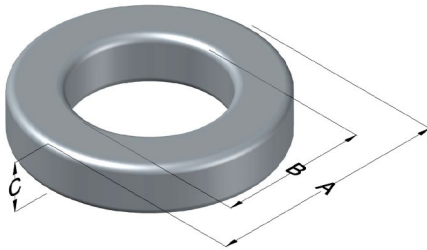




0077617A7

110 Delta Drive
 Pittsburgh, PA 15238
 NAFTA Sales: (1)800-245-3984
 HK Sales : (852)3102-9337
 magnetics@spang.com
 www.mag-inc.com



Kool M μ Permeability (μ)	A _L (nH/T ²)	Core Marking			Coating Color
		Lot Number	Part Number	Inductance Grade	
60	189 ± 8%	XXXXXX	77617A7	N/A	Black

Dimensions	Uncoated		Coated Limits		Packaging
	(mm)	(in)	(mm)	(in)	
OD (A)	62.00	2.440	62.91	2.477	Cardboard cut-outs Box Qty= 50 pcs
ID (B)	32.60	1.283	31.69	1.248	
HT (C)	25.0	0.984	25.91	1.020	

Electrical Characteristics			Physical Characteristics						
Watt Loss @ 100 kHz, 50mT MaxI (mW/cm ³)	DC Bias min (A·T/cm)		Voltage Breakdown wire to wire min (V _{AC})	Break Strength min (kg)	Window Area W _A (mm ²)	Cross Section A _e (mm ²)	Path Length L _e (mm)	Volume V _e (mm ³)	Weight (g)
	80%	50%							
240	34.2	75.5	1000	113	789	360	144	51,800	320

Winding Information				Temperature Rating	
Winding Length Per Turn				Wound Coil Dimensions (mm)	
Winding Factor	(mm)	Winding Factor	(mm)	Curie Temp: 500°C	
				Coating Temp (Continuous up to): 200°C	
				Notes:	
				Maximum OD (70%)	81.4
				Maximum HT (70%)	47.4
				Surface Area (mm ²)	
				Unwound Core	12,300
				40% Winding Factor	16,800

Typical DC Bias Performance

