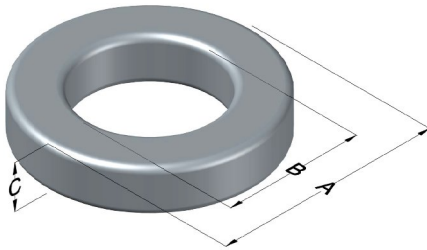




C055930A2

110 Delta Drive
 Pittsburgh, PA 15238
 NAFTA Sales: (1)800-245-3984
 HK Sales : (852)3102-9337
 magnetics@spang.com
 www.mag-inc.com



MPP Permeability (μ)	A_L (nH/T ²)	Core Marking			Coating Color
		Lot Number	Part Number	Inductance Grade	
125	157 \pm 8%	XXXXXX	55930A2	X	Gray

Dimensions	Uncoated		Coated Limits			Packaging
	(mm)	(in)	(mm)	(in)		
OD (A)	26.90	1.060	27.69	1.090	max	Cardboard cut-outs Box Qty= 400 pcs
ID (B)	14.7	0.580	14.1	0.555	min	
HT (C)	11.2	0.440	12.0	0.470	max	

Electrical Characteristics			Physical Characteristics						
Watt Loss @ 100 kHz, 100mT max(mW/cm ³)	DC Bias min (A-T/cm)		Voltage Breakdown wire to wire min (V _{AC})	Break Strength min (kg)	Window Area W _A (mm ²)	Cross Section A _e (mm ²)	Path Length L _e (mm)	Volume V _e (mm ³)	Weight (g)
	80%	50%							
950	19.8	38.5	1000	48	156	65.4	63.5	4,150	36

Winding Information					Temperature Rating	
Winding Length Per Turn				Wound Coil Dimensions (mm)		Curie Temp: 460 °C
Winding Factor	(mm)	Winding Factor	(mm)	Maximum OD (70%)	37.3	Coating Temp (Continuous up to): 200 °C
				Maximum HT (70%)	24.0	
0%	37.5	40%	44.6	Surface Area (mm ²)		Notes:
20%	41.1	45%	45.7	Unwound Core		
25%	41.9	50%	46.6	40% Winding Factor		
30%	42.8	60%	48.8			
35%	43.8	70%	51.3			

Typical DC Bias Performance

