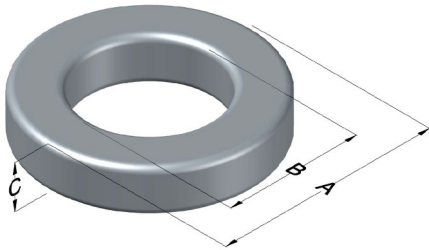




C058894A2

110 Delta Drive
 Pittsburgh, PA 15238
 NAFTA Sales: (1)800-245-3984
 HK Sales : (852)3102-9337
 magnetics@spang.com
 www.mag-inc.com



High Flux Permeability (μ)	A_L (nH/T ²)	Core Marking			Coating Color
		Lot Number	Part Number	Inductance Grade	
60	75 ± 8%	XXXXXX	58894A2	X	Khaki

Dimensions	Uncoated		Coated Limits		Packaging
	(mm)	(in)	(mm)	(in)	
OD (A)	26.90	1.060	27.69	1.090	Cardboard cut-outs Box Qty= 400 pcs
ID (B)	14.7	0.580	14.1	0.555	
HT (C)	11.2	0.440	12.0	0.470	

Electrical Characteristics			Physical Characteristics						
Watt Loss @ 100 kHz, 100mT typical (mW/cm ³)	DC Bias typical (A·T/cm)		Voltage Breakdown wire to wire min (V _{AC})	Break Strength min (kg)	Window Area W _A (mm ²)	Cross Section A _e (mm ²)	Path Length L _e (mm)	Volume V _e (mm ³)	Weight (g)
	80%	50%							
1300	69.2	131	1000	48	156	65.4	63.5	4,150	32

Winding Information				Temperature Rating	
Winding Length Per Turn				Wound Coil Dimensions (mm)	
Winding Factor	(mm)	Winding Factor	(mm)	Maximum OD (70%)	37.3
				Maximum HT (70%)	24.0
0%	37.5	40%	44.6	Notes:	
20%	41.1	45%	45.7		
25%	41.9	50%	46.6		
30%	42.8	60%	48.8		
35%	43.8	70%	51.3		
				Surface Area (mm ²)	
				Unwound Core	2,470
				40% Winding Factor	3,380
				Curie Temp:	500°C
				Coating Temp (Continuous up to):	200°C

Typical DC Bias Performance

