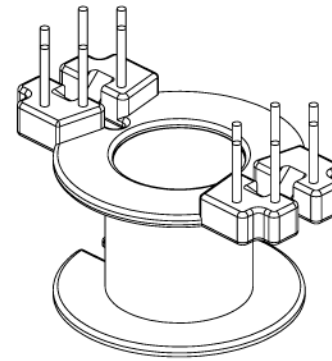
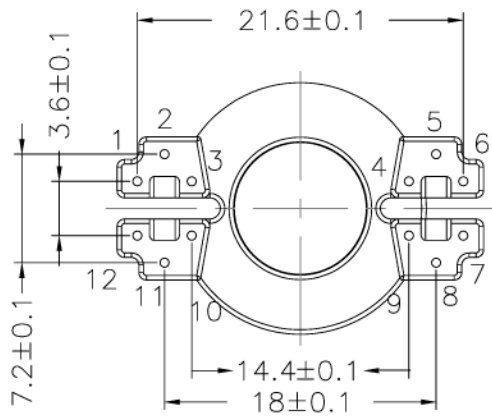
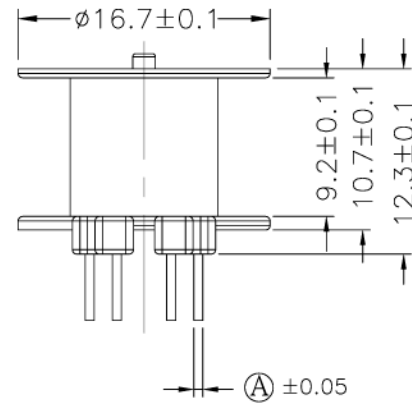
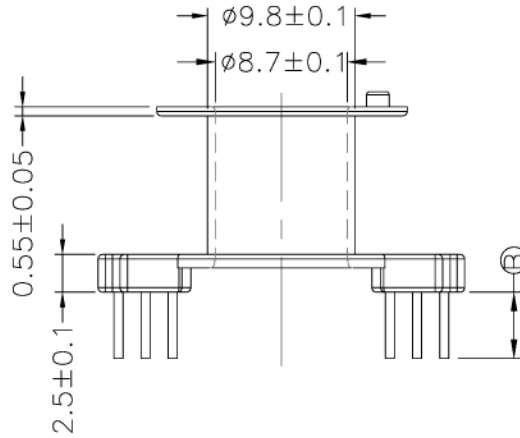
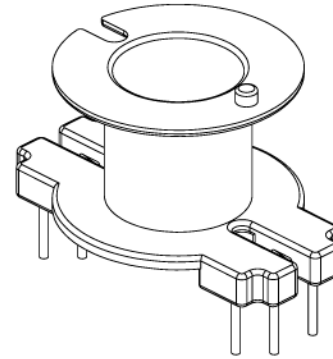
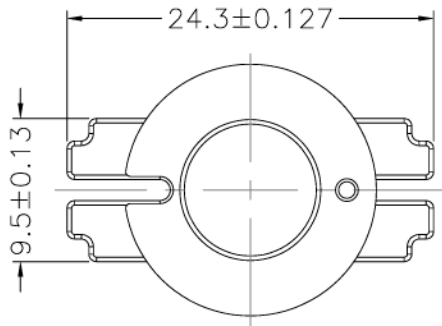


# LEPCOS (North-West Laboratory)

http://ferrite.ru Tel/fax +7-812-369-11-54  
St-Petesburg, Russia

## REVISIONS

REV	SYM	DRAFTER	CHECKER	DATE
△0		Y.G.HSU	W.H.HSU	02/07/07
△1		Y.G.HSU	W.H.HSU	02/23/07
△2		S.Y.TANG	W.H.HSU	09/28/07



DWG NO. Bobbin RM8 1 sec 12 pin E-046

PART NO. MATERIAL (BOBBIN) MATERIAL (TERMINAL) TERMINAL (PLATING) PIN ALLOCATION NOTE

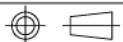
E-046

PM-9630

C.P WIRE

Sn

ALL PIN  
Ⓐ = Ø0.6 Ⓑ 4.4 ±0.3



TOLERANCE: .X±0.15 .XX±0.10 .XXX±0.05

UNIT : m / m

SCALE 2 : 1

Finish: 1. Pb wire Immersion Sn on terminal : Thickness:Sn plating,100,5 μm (200 μ inches) min,Base nickel 0.625 μm (25 μ inches) min.  
2. CP WIRE Immersion Sn on terminal : Thickness:Sn plating,100,5 μm (200 μ inches) min.  
3. Coplanarity deviation: 0.10 mm (0.004 inches) max.

REV 12