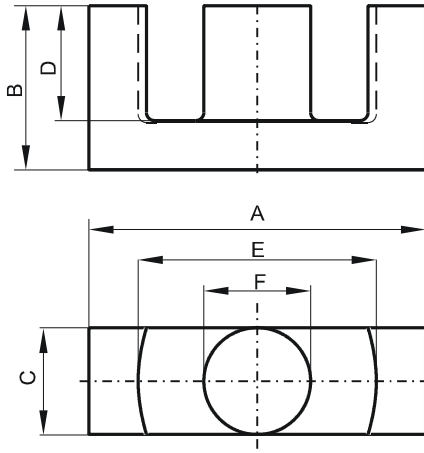


**DIMENSIONS**



(mm)	Nominal:	Tol. min.:	Tol. max.:
<b>A</b>	45.0	-2.0	0.0
<b>B</b>	22.3	-0.2	+ 0.2
<b>C</b>	15.2	-0.6	0.0
<b>D</b>	16.1	0.0	+ 0.8
<b>E</b>	32.5	0.0	+ 1.6
<b>F</b>	15.2	-0.6	0.0
Eff. Parameters			
Ae mm <sup>2</sup>	Amin mm <sup>2</sup>	le mm	Ve mm <sup>3</sup>
173.0	172.0	103.0	17800

**INDUCTANCE**

AL value (nH)	Test conditions
Nom: 4000 Min.: 3000	10 kHz, < 0.5 mT, 25 °C

**MARKING**

P EC
---------

**CORE LOSSES**

P <sub>i</sub> max	Test conditions
129 mW/cm <sup>3</sup> (2.3 W/set)	100 kHz, 100 mT, 100 °C

**NOTE**

Spec. modifications	Previous	Revised
2005-06-22	D=16.13 Min. Losses: General P material	D=16.1 Min. Losses: Detail as indicated