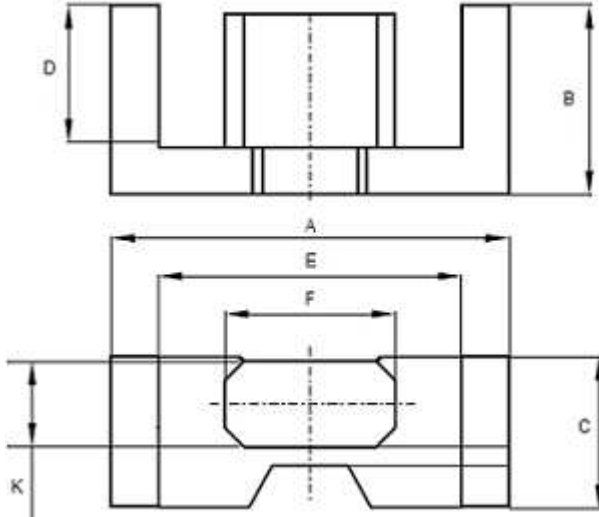


DIMENSIONS



(mm)	Nominal:	Tol. min.:	Tol. max.:
A	30.0	-0.8	+ 0.8
B	15.0	-0.15	+ 0.15
C	9.1	-0.2	+ 0.2
D	11.2	-0.3	+ 0.3
E	22.4	-0.75	+ 0.75
F	14.6	-0.25	+ 0.25
K	4.9	-0.15	+ 0.15
L	0.0	0.0	0.0
M	0.0	0.0	0.0
Eff. Parameters			
Ae mm²	Amin mm²	le mm	Ve mm³
69.0	66.0	68.0	4700

INDUCTANCE

AL value (nH)	Test conditions
Nom: 2200 Min.: 1650	10 kHz, < 0.5 mT, 25 °C

MARKING

R EC

CORE LOSSES

P _i max	Test conditions
96 mW/cm ³ (0.4512 W/set)	100 kHz, 100 mT, 100 °C
620 mW/cm ³ (2.914 W/set)	100 kHz, 200 mT, 100 °C