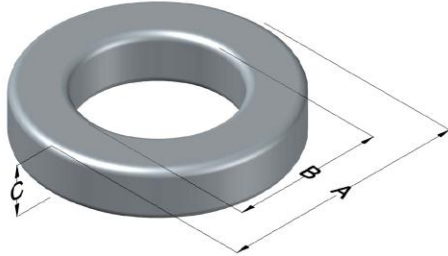




# C055322A2

110 Delta Drive  
 Pittsburgh, PA 15238  
 NAFTA Sales: (1)800-245-3984  
 HK Sales : (852)3102-9337  
 magnetics@spang.com  
 www.mag-inc.com



MPP Permeability ( $\mu$ )	$A_L$ (nH/T <sup>2</sup> )	Core Marking			Coating Color
		Lot Number	Part Number	Inductance Grade	
160	150 $\pm$ 8%	XXXXXX	55322A2	X	Gray

Dimensions	Uncoated		Coated Limits		Packaging
	(mm)	(in)	(mm)	(in)	
OD (A)	35.80	1.410	36.71	1.445	Cardboard cut-outs Box Qty= 220 pcs
ID (B)	22.4	0.880	21.5	0.848	
HT (C)	10.5	0.412	11.4	0.447	

Electrical Characteristics			Physical Characteristics						
Watt Loss @ 100 kHz, 100mT max(mW/cm <sup>3</sup> )	DC Bias min (A-T/cm)		Voltage Breakdown wire to wire min (V <sub>AC</sub> )	Break Strength min (kg)	Window Area W <sub>A</sub> (mm <sup>2</sup> )	Cross Section A <sub>e</sub> (mm <sup>2</sup> )	Path Length L <sub>e</sub> (mm)	Volume V <sub>e</sub> (mm <sup>3</sup> )	Weight (g)
	80%	50%							
950	16.6	31.0	1000	50	364	67.8	89.8	6,090	53

Winding Information					Temperature Rating	
Winding Length Per Turn				Wound Coil Dimensions (mm)		Curie Temp: 460 °C
Winding Factor	(mm)	Winding Factor	(mm)	Maximum OD (70%)	51.1	Coating Temp (Continuous up to): 200 °C
				Maximum HT (70%)	29.6	
0%	37.9	40%	48.9	Surface Area (mm <sup>2</sup> )		Notes:
20%	43.5	45%	50.6	Unwound Core		
25%	44.8	50%	52.0	40% Winding Factor		
30%	46.0	60%	55.5			
35%	47.6	70%	59.3			

