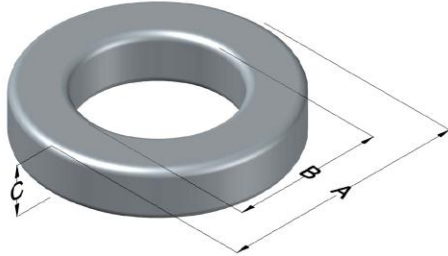




C055324A2

110 Delta Drive
 Pittsburgh, PA 15238
 NAFTA Sales: (1)800-245-3984
 HK Sales : (852)3102-9337
 magnetics@spang.com
 www.mag-inc.com



MPP Permeability (μ)	A_L (nH/T ²)	Core Marking			Coating Color
		Lot Number	Part Number	Inductance Grade	
125	117 ± 8%	XXXXXX	55324A2	X	Gray

Dimensions	Uncoated		Coated Limits		Packaging
	(mm)	(in)	(mm)	(in)	
OD (A)	35.80	1.410	36.71	1.445	Cardboard cut-outs Box Qty= 220 pcs
ID (B)	22.4	0.880	21.5	0.848	
HT (C)	10.5	0.412	11.4	0.447	

Electrical Characteristics			Physical Characteristics						
Watt Loss @ 100 kHz, 100mT max(mW/cm ³)	DC Bias min (A-T/cm)		Voltage Breakdown wire to wire min (V _{AC})	Break Strength min (kg)	Window Area W _A (mm ²)	Cross Section A _e (mm ²)	Path Length L _e (mm)	Volume V _e (mm ³)	Weight (g)
	80%	50%							
950	19.8	38.5	1000	50	364	67.8	89.8	6,090	52

Winding Information					Temperature Rating	
Winding Length Per Turn				Wound Coil Dimensions (mm)		Curie Temp: 460 °C
Winding Factor	(mm)	Winding Factor	(mm)	Maximum OD (70%)	51.1	Coating Temp (Continuous up to): 200 °C
				Maximum HT (70%)	29.6	
0%	37.9	40%	48.9	Surface Area (mm ²)		Notes:
20%	43.5	45%	50.6	Unwound Core		
25%	44.8	50%	52.0	40% Winding Factor		
30%	46.0	60%	55.5			
35%	47.6	70%	59.3			

Typical DC Bias Performance

