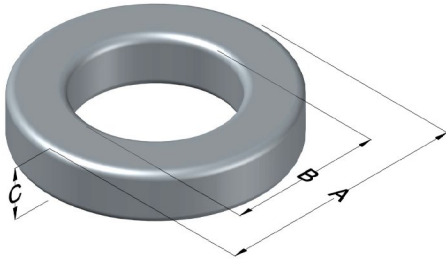




# C055351A2

110 Delta Drive  
 Pittsburgh, PA 15238  
 NAFTA Sales: (1)800-245-3984  
 HK Sales : (852)3102-9337  
 magnetics@spang.com  
 www.mag-inc.com



MPP Permeability ( $\mu$ )	$A_L$ (nH/T <sup>2</sup> )	Core Marking			Coating Color
		Lot Number	Part Number	Inductance Grade	
60	51 $\pm$ 8%	XXXXXX	55351A2	X	Gray

Dimensions	Uncoated		Coated Limits			Packaging  Cardboard cut-outs Box Qty= 480 pcs
	(mm)	(in)	(mm)	(in)		
OD (A)	23.6	0.928	24.4	0.958	max	
ID (B)	14.4	0.567	13.7	0.542	min	
HT (C)	8.89	0.350	9.66	0.380	max	

Electrical Characteristics			Physical Characteristics						
Watt Loss @ 100 kHz, 100mT max(mW/cm <sup>3</sup> )	DC Bias min (A-T/cm)		Voltage Breakdown wire to wire min (V <sub>AC</sub> )	Break Strength min (kg)	Window Area W <sub>A</sub> (mm <sup>2</sup> )	Cross Section A <sub>e</sub> (mm <sup>2</sup> )	Path Length L <sub>e</sub> (mm)	Volume V <sub>e</sub> (mm <sup>3</sup> )	Weight (g)
	80%	50%							
950	39.7	74.7	1000	29	149	38.8	58.8	2,280	19

Winding Information					Temperature Rating	
Winding Length Per Turn				Wound Coil Dimensions (mm)		Curie Temp: 460 °C
Winding Factor	(mm)	Winding Factor	(mm)	Maximum OD (70%)	33.5	Coating Temp (Continuous up to): 200 °C
				Maximum HT (70%)	21.4	
0%	29.8	40%	36.9	Surface Area (mm <sup>2</sup> )		Notes:
20%	33.4	45%	38.0	Unwound Core		
25%	34.2	50%	38.9	40% Winding Factor		
30%	35.0	60%	41.1			
35%	36.1	70%	43.6			

## Typical DC Bias Performance

