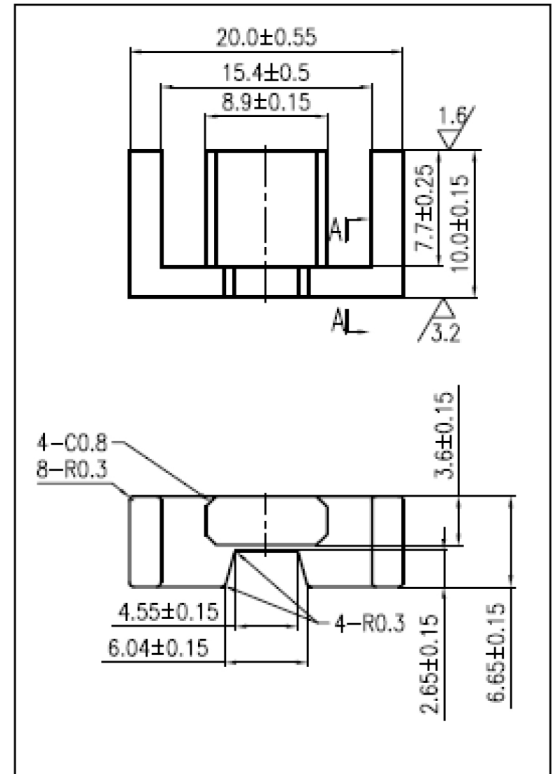


CORE SETS

Effective core parameters

SYMBOL	PARAMETER	VALUE	UNIT
$\Sigma (1/A)$	core factor (C_1)	1.52	mm^{-1}
V_e	effective volume	1457.0	mm^3
l_e	effective length	47.0	mm
A_e	effective area	31.0	mm^2
A_{\min}	minimum area	29.0	mm^2
W_t	mass of core set	≈ 7.2	g



Characteristic

GRADE	AL (nH/N ²)	B (mT)	CORE LOSS (W)
	f=10kHz U=0.25V	H=250A/m f=25kHz T=100°C	f=100kHz B=200mT T=100°C
DMR40	1300 ± 25%	≥ 290	≤ 1.01
DMR44	1300 ± 25%	≥ 290	≤ 0.80
DMR95	1800 ± 25%	≥ 300	≤ 0.82

GAP

GRADE	AL (nH)	μ_e	GAP (mm)
DMR44	63 ± 3%	78	≈ 0.96
DMR44	100 ± 3%	121	≈ 0.51
DMR44	160 ± 3%	194	≈ 0.29
DMR44	250 ± 3%	303	≈ 0.16
DMR44	315 ± 3%	378	≈ 0.12

GRADE	AL (nH/N ²)	μ_i
	f=10kHz U=0.25V	f=10kHz U=0.25V
R12K	≥ 4700 mirror	≈ 12000