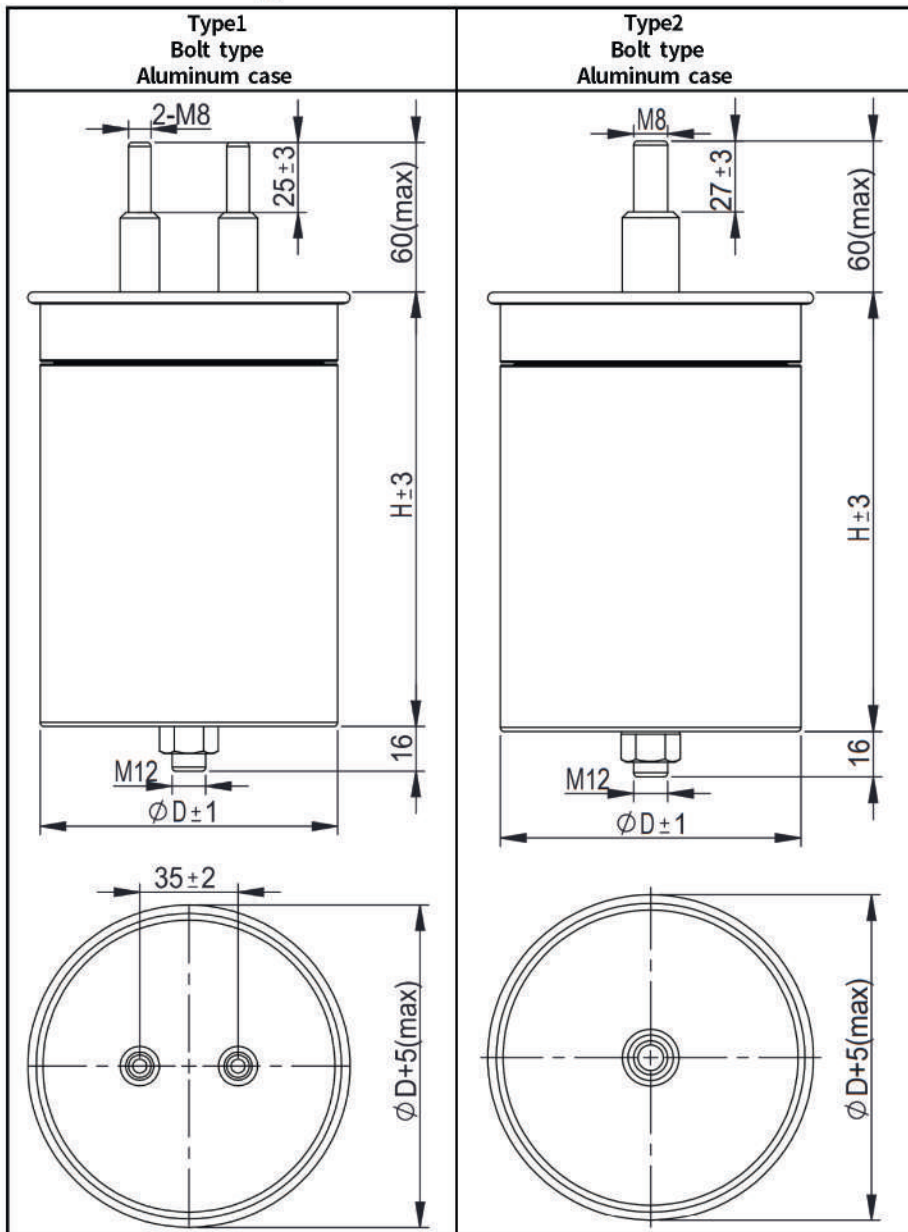


## Snubber capacitor for high voltage, high current pulses (Oil-filled type)

### ■ Outline Drawing



### ■ Features

- Ceramic lead-through
- Self-healing property
- Filled with oil
- Anti-explosion design, more safety

### ■ Applications

- Especially suitable for snubber circuits
- For high pulse and high frequency application



# C3T

## ■ Specifications

Reference Standard	GB/T 17702 (IEC 61071)	
Climatic Category	40/85/56	
Operating temperature range(case)	-40°C ~ 85°C	
Rated Voltage (U <sub>N</sub> )	1 400Vac ~ 3 500Vac	
Capacitance Tolerance	±5%(J), ±10%(K)	
Test voltage between terminals (U <sub>TT</sub> )	2.15U <sub>rms</sub> (ac), 10s or 3.05U <sub>rms</sub> (dc), 10s	
Test voltage between case and terminal (U <sub>TC</sub> )	U <sub>N</sub> <1 500Vac, 3 000Vac(10s, 50Hz, 20°C±5°C) U <sub>N</sub> ≥1 500Vac, ( $\sqrt{2}$ U <sub>N</sub> +1 000)Vac(10s, 50Hz, 20°C±5°C)	
Dielectric dissipation factor (tanδ <sub>d</sub> )	2×10 <sup>-4</sup>	
Insulation Resistance (IR×C <sub>N</sub> )	≥10 000s(20°C, 500Vdc,1min)	
Expected lifetime	≥100 000h @ U <sub>N</sub> , θ <sub>hs</sub> =70°C	
Installation	Terminal form	Bolt type
	Fixed style	Bottom-bolt
Max. Torque of terminals	M8: 5N·m	
Max. Torque of Installation	M12: 10N·m	

## ■ Part number system

The 15 digits part number is formed as follow:

1	2	3	4	5	6	7	8	9	10	11	12	13	14	15
C	3	T												

Digit 1 to 3 Series code  
C3T

Digit 4 to 5 A.C. rated voltage  
M3=1 400V D3=2 000V E3=2 500V Q6=3 200V R5=3 500V

Digit 6 to 8 Rated capacitance value  
for example: 105=10×10<sup>5</sup>pF=1.0μF

Digit 9 Capacitance tolerance  
J=±5%, K=±10%

Digit 10~15 Internal use

## ■ Technical data

C <sub>N</sub> (μF)	U <sub>N</sub> (Vdc)	U <sub>rms</sub> (Vac)	dV/dt (V/μs)	İ (A)	İ <sub>s</sub> (A)	I <sub>max</sub> 100kHz@70°C (A)	R <sub>s</sub> @100kHz (mΩ)	L <sub>s</sub> (nH)	D (mm)	H (mm)	Part number	外形样式 Shape style
4.7	1400	1000	100	470	1200	60	9.3	150	60	175	C3TM3475+*****	Type1
1.0	2000	1400	100	100	300	10	10.0	200	60	145	C3TD3105+*****	Type1
4.0	2500	1700	150	600	1800	40	5.0	200	86	280	C3TE3405+*****	Type1
2.0	3200	2200	1400	2800	7000	32	10.0	200	86	170	C3TQ6205+*****	Type1
0.68	3500	2400	2800	1900	4800	18	11.0	250	60	130	C3TR5684+*****	Type2

- Note: 1. "+" =capacitance tolerance code, J=±5%, K=±10%.  
 2. "\*\*\*\*\*" = Internal use.  
 3. "I<sub>max</sub>" @100kHz, θ<sub>amb</sub>=70°C, Δθ<sub>case</sub>=15°C.  
 4. "R<sub>s</sub>", "L<sub>s</sub>" are typical values.  
 5. Other values and dimensions is available on request.