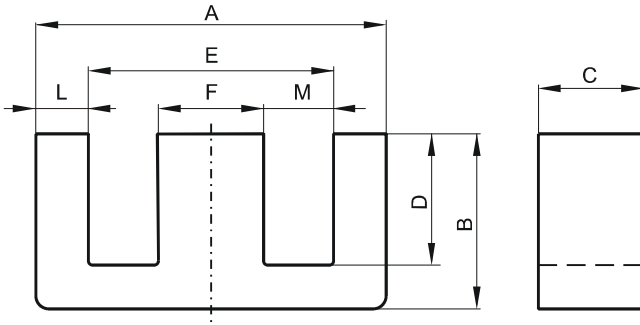


Specification for:

0R45528EC

110 Delta Drive
Pittsburgh, PA 15238
Phone: 412/696-1333
Fax: 412/696-0333
Email: magnetics@spang.com

DIMENSIONS



(mm)	Nominal:	Tol. min.:	Tol. max.:
A	56.2	-2.1	0.0
B	27.5	-0.3	+ 0.3
C	21.0	-0.8	0.0
D	18.5	0.0	+ 0.8
E	37.5	0.0	+ 1.5
F	17.2	-0.5	0.0
L	9.35		
M	10.15		
Eff. Parameters			
Ae mm²	Amin mm²	le mm	Ve mm³
353.0	345.0	124.0	44000

INDUCTANCE

AL value (nH)	Test conditions
Nom: 6293 Min.: 4720	10 kHz, < 0.5 mT, 25 °C

MARKING

0R45528EC PXXXXX

CORE LOSSES

P _i max	Test conditions
86 mW/cm ³ (3.8 W/set)	100 kHz, 100 mT, 100 °C
614 mW/cm ³ (27.0 W/set)	100 kHz, 200 mT, 100 °C

NOTE

Spec. modifications	Previous	Revised
2005-06-22	A=55.5 Max. A=54.2 Min. C=20.24 Min. D=18.54 Min. F=17.15 Max. L=8.38±0.38 M=10.67±0.38 Losses: General R material	A=56.2 Max. A=54.1 Min. C=20.2 Min. D=18.5 Min. F=17.2 Max. L=9.35 Ref. M=10.15 Ref. Losses: Detail as indicated