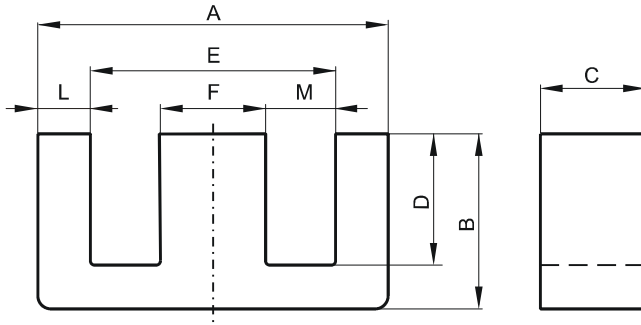


Specification for:

**0R45724EC**

110 Delta Drive  
Pittsburgh, PA 15238  
Phone: 412/696-1333  
Fax: 412/696-0333  
Email: magnetics@spang.com

**DIMENSIONS**



(mm)	Nominal:	Tol. min.:	Tol. max.:
<b>A</b>	56.1	-1.0	+ 1.0
<b>B</b>	23.6	-0.25	+ 0.25
<b>C</b>	18.8	-0.25	+ 0.25
<b>D</b>	14.6	-0.13	+ 0.13
<b>E</b>	38.1 Min.		
<b>F</b>	18.8	-0.25	+ 0.25
<b>L</b>	9.5 Nom.		
<b>M</b>	9.03 Nom.		
Eff. Parameters			
<b>Ae mm<sup>2</sup></b>	<b>Amin mm<sup>2</sup></b>	<b>le mm</b>	<b>Ve mm<sup>3</sup></b>
337.0	337.0	107.0	36000

**INDUCTANCE**

AL value (nH)	Test conditions
Nom: 8093 Min.: 6070	10 kHz, < 0.5 mT, 25 °C

**MARKING**

0R45724EC PXXXXX
---------------------

**CORE LOSSES**

P <sub>i</sub> max	Test conditions
100 mW/cm <sup>3</sup> (3.6 W/set)	100 kHz, 100 mT, 100 °C
611 mW/cm <sup>3</sup> (22 W/set)	100 kHz, 200 mT, 100 °C

**NOTE**

Spec. modifications	Previous	Revised
2005-06-22	A=56.0 Min. B=23.82 Max. B=23.47 Min. L=9.02 Nom. M=9.4 Nom. Losses: General R material	A=55.1 Min. B=23.85 Max. B=23.35 Min. L=9.5 Nom. M=9.03 Nom. Losses: Detail as indicated