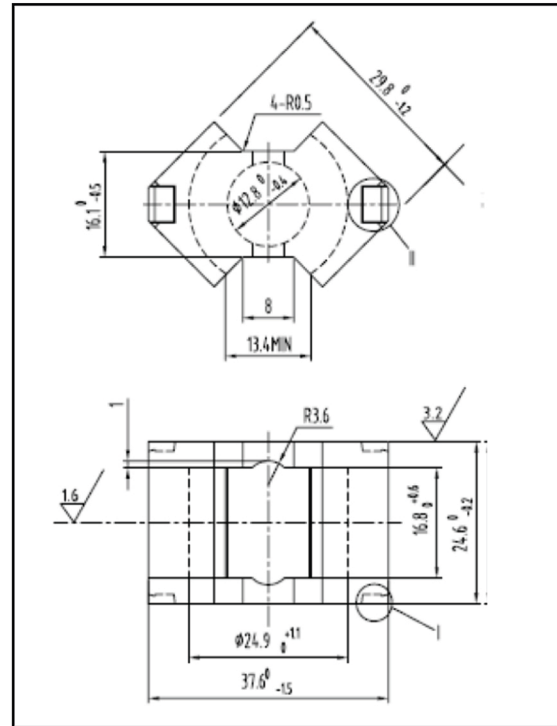


RM cores

CORE SETS

Effective core parameters

SYMBOL	PARAMETER	VALUE	UNIT
$\Sigma (1/A)$	core factor (C_1)	0.39	mm^{-1}
V_e	effective volume	8322.0	mm^3
l_e	effective length	57.0	mm
A_e	effective area	146.0	mm^2
A_{\min}	minimum area	125.0	mm^2
W_t	mass of core set	≈ 47.7	g



Characteristic

GRADE	AL (nH/N ²)	B (mT)	CORE LOSS (W)
	f=10kHz U=0.25V	H=250A/m f=25kHz T=100°C	f=100kHz B=200mT T=100°C
DMR40	$5200 \pm 25\%$	≥ 315	≤ 6.68
DMR44	$5200 \pm 25\%$	≥ 315	≤ 5.72
DMR47	$5400 \pm 25\%$	≥ 325	≤ 4.77
DMR95	$6800 \pm 25\%$	≥ 315	≤ 4.58

GAP

GRADE	AL (nH)	μ_e	GAP (mm)
DMR44	$160 \pm 3\%$	≈ 49	1.56
DMR44	$250 \pm 3\%$	≈ 78	0.90
DMR47	$250 \pm 3\%$	≈ 78	0.90
DMR44	$315 \pm 5\%$	≈ 97	0.69
DMR44	$400 \pm 5\%$	≈ 123	0.52
DMR44	$630 \pm 5\%$	≈ 194	0.30
DMR44	$1000 \pm 5\%$	≈ 310	0.12