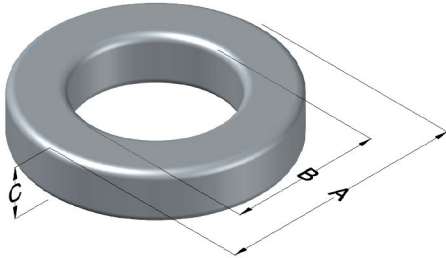




**0077445A7**

110 Delta Drive  
 Pittsburgh, PA 15238  
 NAFTA Sales: (1)800-245-3984  
 HK Sales : (852)3102-9337  
 magnetics@spang.com  
 www.mag-inc.com



Kool M $\mu$ Permeability ( $\mu$ )	A <sub>L</sub> (nH/T <sup>2</sup> )	Core Marking			Coating Color
		Lot Number	Part Number	Inductance Grade	
75	16 ± 15%	N/A	N/A	N/A	Black

Dimensions	Uncoated		Coated Limits			Packaging
	(mm)	(in)	(mm)	(in)		
OD (A)	3.56	0.140	4.20	0.165	max	Bulk Pack 5 vials/box Box Qty= 7500 pcs
ID (B)	1.78	0.070	1.27	0.050	min	
HT (C)	1.52	0.060	2.16	0.085	max	

Electrical Characteristics			Physical Characteristics						
Watt Loss @ 100 kHz, 100mT max(mW/cm <sup>3</sup> )	DC Bias min (A-T/cm)		Voltage Breakdown wire to wire min (V <sub>AC</sub> )	Break Strength min (kg)	Window Area W <sub>A</sub> (mm <sup>2</sup> )	Cross Section A <sub>e</sub> (mm <sup>2</sup> )	Path Length L <sub>e</sub> (mm)	Volume V <sub>e</sub> (mm <sup>3</sup> )	Weight (g)
	1000	80%							
	20.2	50.8							

Winding Information					Temperature Rating	
Winding Length Per Turn				Wound Coil Dimensions (mm)		Curie Temp: 500°C
Winding Factor	(mm)	Winding Factor	(mm)	Maximum OD (70%)	4.95	Coating Temp (Continuous up to): 200°C
				Maximum HT (70%)	2.74	
0%	7.24	40%	7.89	Surface Area (mm <sup>2</sup> )		Notes:  *No voltage breakdown min for A2 or A7 with OD ≤4.65mm
20%	7.56	45%	7.98	Unwound Core		
25%	7.65	50%	8.08	40% Winding Factor		
30%	7.70	60%	8.27			
35%	7.81	70%	8.48			

