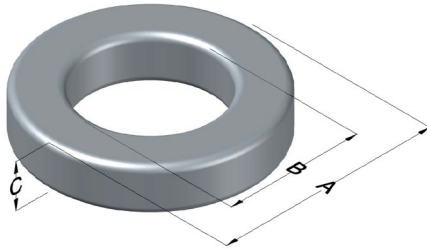




0088071A7

110 Delta Drive
 Pittsburgh, PA 15238
 NAFTA Sales: (1)800-245-3984
 HK Sales : (852)3102-9337
 magnetics@spang.com
 www.mag-inc.com



AmoFlux Permeability (μ)	A_L (nH/T ²)	Core Marking			Coating Color
		Lot Number	Part Number	Inductance Grade	
60	61 ± 8%	XXXXXX	88071A7	N/A	Blue

Dimensions	Uncoated		Coated Limits			Packaging
	(mm)	(in)	(mm)	(in)		
OD (A)	32.80	1.291	33.66	1.325	max	Cardboard cut-outs Box Qty= 250 pcs
ID (B)	20.1	0.791	19.30	0.760	min	
HT (C)	10.7	0.420	11.43	0.450	max	

Electrical Characteristics			Physical Characteristics						
Watt Loss @ 100 kHz, 100mT max(mW/cm ³)	DC Bias min (A-T/cm)		Voltage Breakdown wire to wire min (V _{AC})	Break Strength min (kg)	Window Area W _A (mm ²)	Cross Section A _e (mm ²)	Path Length L _e (mm)	Volume V _e (mm ³)	Weight (g)
	80%	50%							
1000	47.7	95.4	1000	49	297	65.6	81.4	5340	33

Winding Information				Temperature Rating	
Winding Length Per Turn				Wound Coil Dimensions (mm)	
Winding Factor	(mm)	Winding Factor	(mm)	Curie Temp: 400°C	
				Operating Temp (Continuous up to): 155°C	
0%	37.4	40%	47.2	Notes:	
20%	42.4	45%	48.8		
25%	43.5	50%	50.1		
30%	44.7	60%	53.2		
35%	46.1	70%	56.7		
				Maximum OD (70%)	46.7
				Maximum HT (70%)	28.0
				Surface Area (mm ²)	
				Unwound Core	3,150
				40% Winding Factor	4,800

