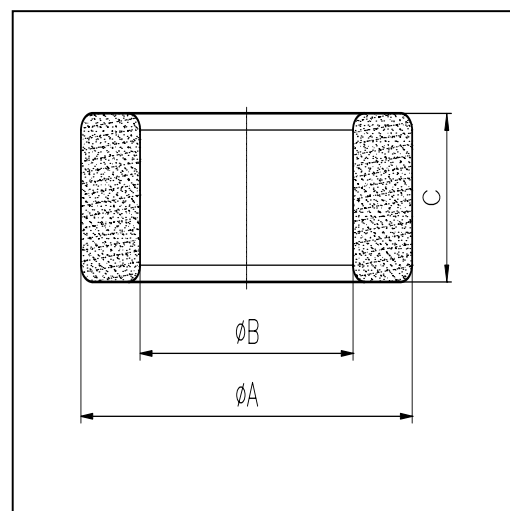


CORE SETS

Effective core parameters

SYMBOL	PARAMETER	VALUE	UNIT
$\Sigma (1/A)$	core factor (C_1)	0.77	mm^{-1}
V_e	effective volume	12025.00	mm^3
l_e	effective length	96.20	mm
A_e	effective area	125.00	mm^2
W_t	mass of core	≈ 61.8	g



尺寸	A	B	C
Coat			
Uncoat	40.0 ± 0.6	24.0 ± 0.5	16.0 ± 0.4
Coated	41.0max	23.1min	16.9max

Note: With grass green epoxy coating

Characteristic

GRADE	AL (nH/N^2)	B (mT)	CORE LOSS (W)
	$f=10\text{kHz}$ $U=0.25\text{V}$	$H=250\text{A/m}$ $f=25\text{kHz}$ $T=100^\circ\text{C}$	$f=100\text{kHz}$ $B=200\text{mT}$ $T=100^\circ\text{C}$
DMR40	$3500 \pm 25\%$	≥ 320	≤ 7.42
DMR44	$3500 \pm 25\%$	≥ 320	≤ 6.80
DMR95	$5200 \pm 25\%$	≥ 340	≤ 6.50

GRADE	AL (nH/N^2)	μ_i
	$f=10\text{kHz}$ $U=0.25\text{V}$	$f=10\text{kHz}$ $U=0.25\text{V}$
R4K	$7000 \pm 25\%$	≈ 4300
R5K	$8160 \pm 25\%$	≈ 5000
R7K	$11430 \pm 25\%$	≈ 7000
R10K	$16330 \pm 30\%$	≈ 10000
R12K	≥ 13060	≈ 12000