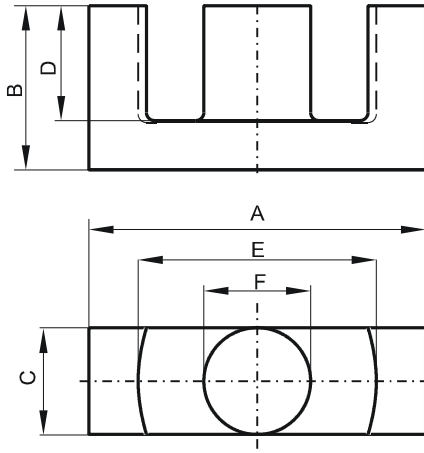


Specification for:

0P44949EC

110 Delta Drive
Pittsburgh, PA 15238
Phone: 412/696-1333
Fax: 412/696-0333
Email: magnetics@spang.com

DIMENSIONS



(mm)	Nominal:	Tol. min.:	Tol. max.:
A	49.8	-2.2	0.0
B	24.7	-0.2	+ 0.2
C	16.7	-0.6	0.0
D	17.7	0.0	+ 0.8
E	36.1	0.0	+ 1.8
F	16.7	-0.6	0.0
Eff. Parameters			
Ae mm ²	Amin mm ²	le mm	Ve mm ³
211.0	209.0	114.0	24000

INDUCTANCE

AL value (nH)	Test conditions
Nom: 4440 Min.: 3330	10 kHz, < 0.5 mT, 25 °C

MARKING

0P44949EC PXXXXX

CORE LOSSES

P _i max	Test conditions
129 mW/cm ³ (3.1 W/set)	100 kHz, 100 mT, 100 °C

NOTE

Spec. modifications	Previous	Revised
2005-06-22	A=47.9 Min. A=49.48 Max. E=36.12 Min. Losses: General P material	A=47.6 Min. A=49.8 Max. E=36.1 Min. Losses: Detail as indicated