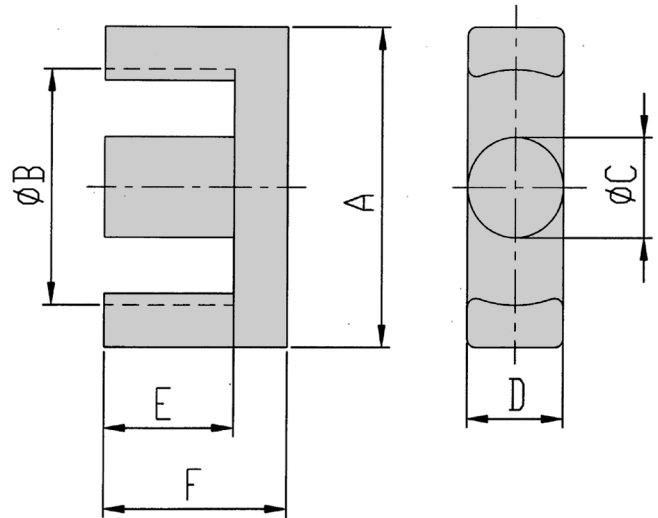
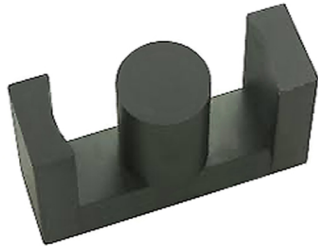


ETD34



Core Factor $C1(\text{mm}^{-1})$	Effective Area $A_e(\text{mm}^2)$
0.77	78.10
Effective Length $L_e(\text{mm})$	Effective Volume $V_e(\text{mm}^3)$
79.40	7781

A	Bmin	C	D	E	F
34.2 ± 0.5	25.6	10.8 ± 0.3	10.8 ± 0.3	12.1 ± 0.3	17.3 ± 0.3

Characteristic

	AL (nH/N ²)	B (mT)	CORE LOSS (W)
	f=10kHz U=0.25V	H=250A/m f=25kHz T=100°C	f=100kHz B=200mT T=100°C
DMR40	$2690 \pm 25\%$	≥ 320	≤ 8.40
DMR44	$2700 \pm 25\%$	≥ 320	≤ 7.70