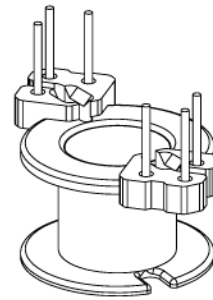
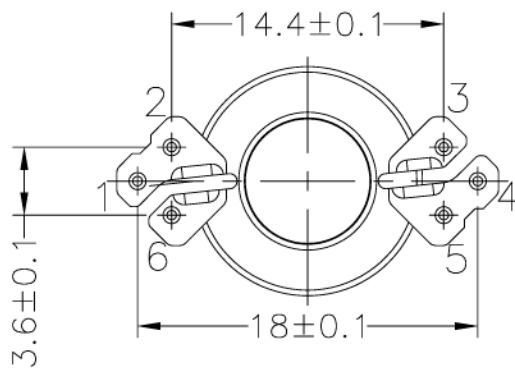
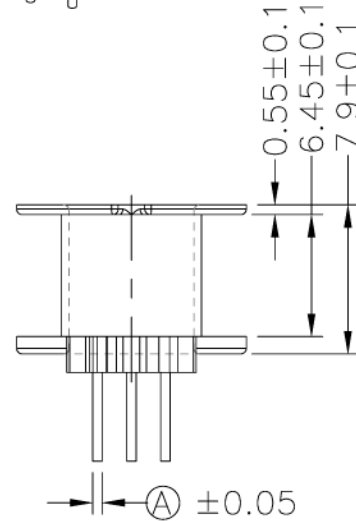
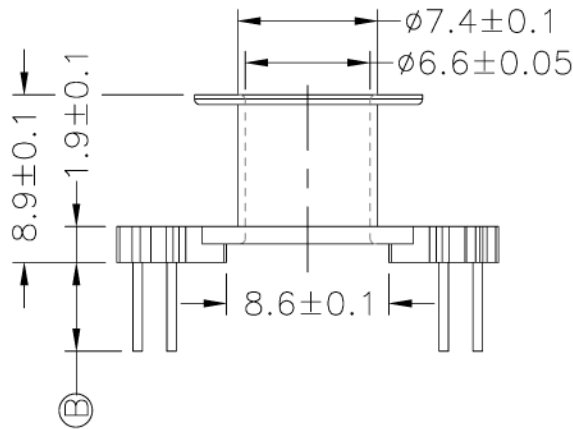
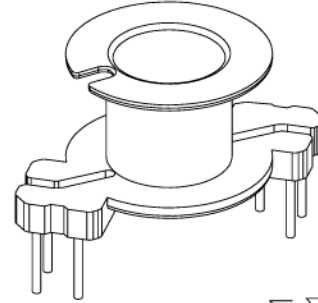
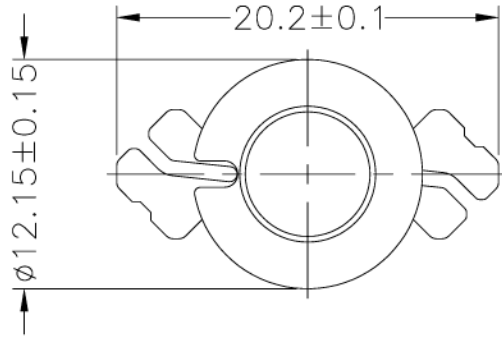


LEPCOS (North-West Laboratory)
<http://ferrite.ru> Tel/fax +7-812-369-11-54
 St-Petesburg, Russia

REVISIONS				
REV	SYM	DRAFTER	CHECKER	DATE
△5		T.S.LII	W.H.HSU	06/02/03
△6		T.S.LII	W.H.HSU	07/21/06
△7		S.Y.TANG	W.H.HSU	04/11/07



DWG NO. Bobbin RM6 1 sec 6 pin E-045

PART NO.	MATERIAL (BOBBIN)	MATERIAL (TERMINAL)	TERMINAL (PLATING)	PIN ALLOCATION	NOTE
E-045	PM-9630	C.P WIRE	Sn	ALL PIN, (A)=φ 0.5 (B)=4.7±0.3	

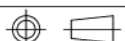
E-045

PM-9630

C.P WIRE

Sn

ALL PIN, (A)=φ 0.5 (B)=4.7±0.3



TOLERANCE: .X±0.15 .XX±0.10 .XXX±0.05

UNIT : m / m

SCALE 2.5 : 1

Finish: 1. Pb wire Immersion Sn on terminal : Thickness:Sn plating,100,5 μm (200 μ inches) min,Base nickel 0.625 μm (25 μ inches) min.
 2. CP wire Immersion Sn on terminal : Thickness:Sn plating,100,5 μm (200 μ inches) min.
 3. Coplanarity deviation: 0.10 mm (0.004 inches) max.

REV 7