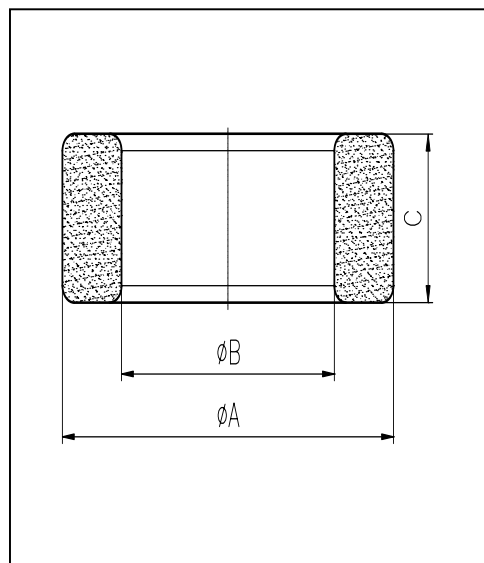


CORE SETS

Effective core parameters

SYMBOL	PARAMETER	VALUE	UNIT
$\Sigma (1/A)$	core factor ( $C_1$ )	1.03	$\text{mm}^{-1}$
$V_e$	effective volume	2829.4	$\text{mm}^3$
$l_e$	effective length	54.1	mm
$A_e$	effective area	52.3	$\text{mm}^2$
$W_t$	mass of core	$\approx 14.4$	g



尺寸 Coat	A	B	C
Uncoat	$22.1 \pm 0.4$	$13.7 \pm 0.3$	$12.7 \pm 0.25$
Coated	22.8max	13.0min	13.4max

Note: With grass green epoxy coating

Characteristic

GRADE	AL (nH/N <sup>2</sup> )	B (mT)	CORE LOSS (W)
	f=10kHz U=0.25V	H=250A/m f=25kHz T=100°C	f=100kHz B=200mT T=100°C
DMR40	$2790 \pm 25\%$	$\geq 320$	$\leq 1.87$
DMR44	$2790 \pm 25\%$	$\geq 320$	$\leq 1.51$

GRADE	AL (nH/N <sup>2</sup> )	$\mu_i$
	f=10kHz U=0.25V	f=10kHz U=0.25V
R5K	$6070 \pm 25\%$	$\approx 5000$
R7K	$8490 \pm 25\%$	$\approx 7000$
R10K	$12000 \pm 30\%$	$\approx 10000$
R12K	$14000 \pm 30\%$	$\approx 12000$