



Product information

# Single-phase high performance filter-DEA4

## Description

Small size, guide rail installation, terminal station connection, can be customized, has the characteristics of strong anti-interference, bipolar design of high-performance filtering, and a wide range of uses.

## Technical Data

Rated Voltage	115/250VAC
Line Frequency	50/60Hz
Test Voltage	1500VDC (line/line) 2150VAC (line/ground)
Insulation Resistance	>50M @500VDC
Temperature Rise	<30
Climatic Category	25/085/21
Housing Material	Nickel-plated iron

## Approval & Compliance



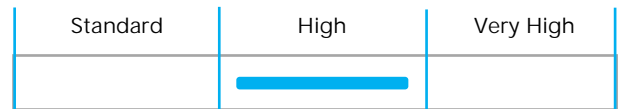
## Features

- Rated current : 3A-20A
- Guide rail installation, convenient and fast
- Terminal station link mode
- Can be customized upon request

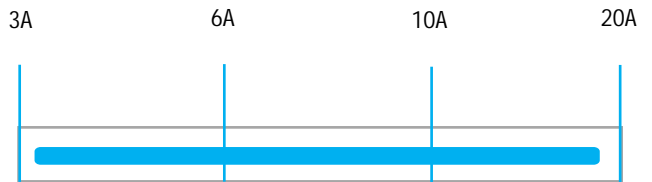
## Applications

- Electric power system
- Electrical and electronic equipment
- Electronic data processing equipment
- Office automation and data communication equipment
- Industrial applications

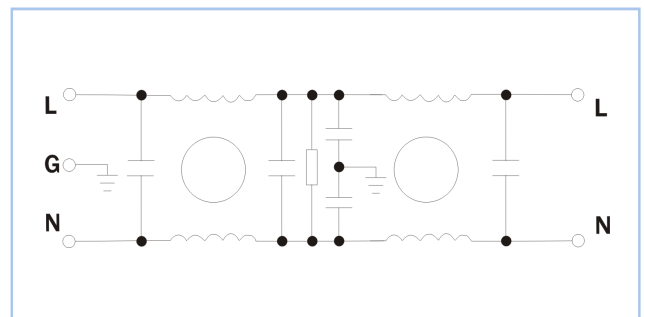
## Performance Indicator



## Rated Current [A]

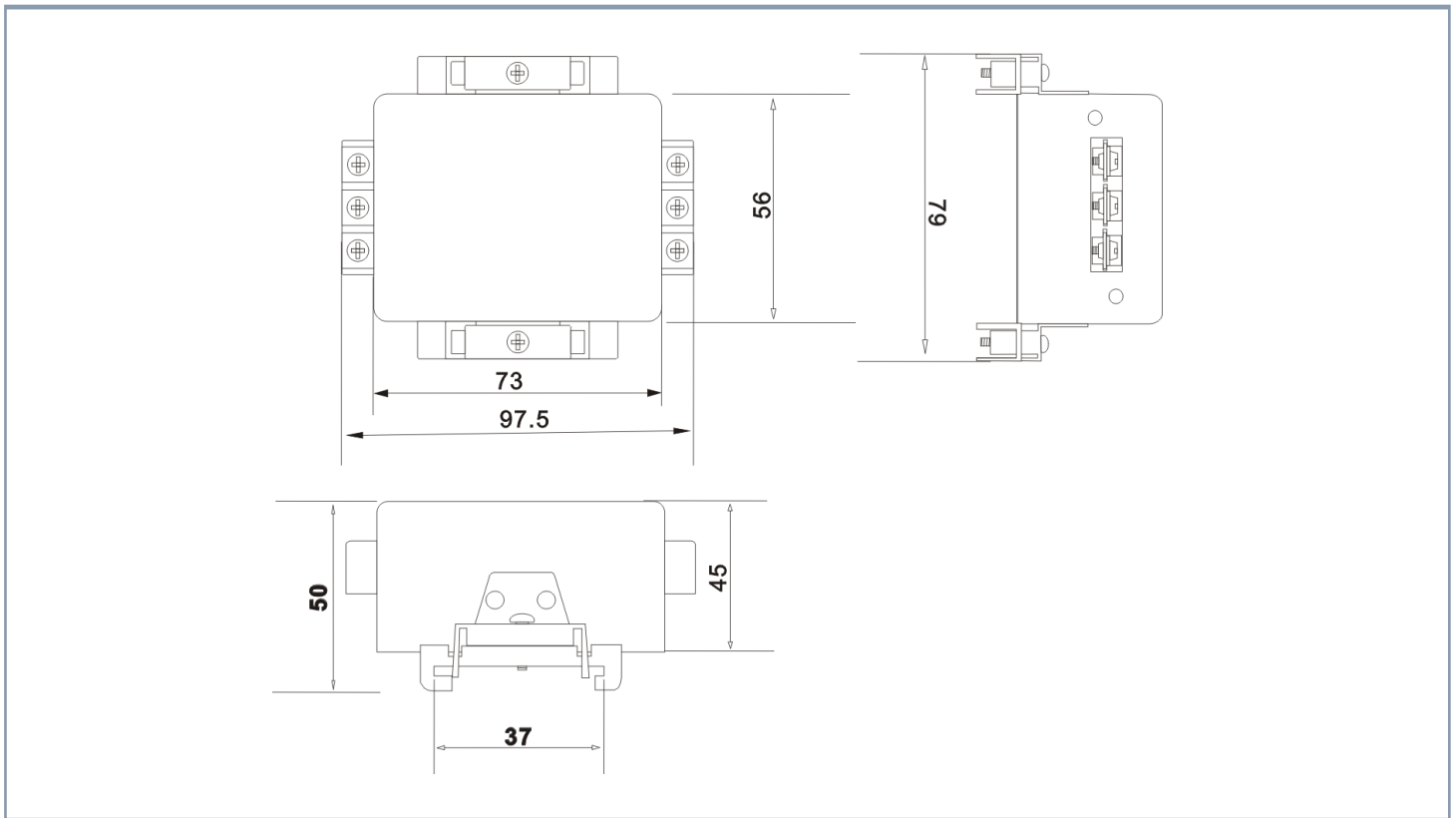


## Typical Circuit Diagram



Part No	Rated Current	Rated Current	Case Type	Termination		Safety Certification	Remark
				Input	Output		
DEA4-3A	3A	<1.0mA	A4	Bolts/Lnserts	Bolts/Lnserts	CUL、CE CQC、ROHS	Parameter customization
DEA4-6A	6A	<1.0mA	A4	Bolts/Lnserts	Bolts/Lnserts		
DEA4-10A	10A	<1.0mA	A4	Bolts/Lnserts	Bolts/Lnserts		
DEA4-20A	20A	<1.0mA	A4	Bolts/Lnserts	Bolts/Lnserts		

**Overall Dimension ( ±1mm)**



**Insertion loss -(common mode)**

