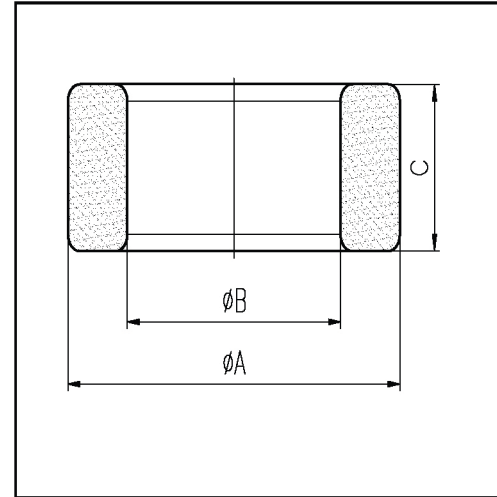


CORE SETS

Effective core parameters

SYMBOL	PARAMETER	VALUE	UNIT
$\Sigma (1/A)$	core factor (C_1)	2.85	mm^{-1}
V_e	effective volume	430.50	mm^3
l_e	effective length	35.00	mm
A_e	effective area	12.30	mm^2
W_t	mass of core	≈ 2.2	g



尺寸	A	B	C
Coat			
Uncoat	14.0 ± 0.4	9.0 ± 0.25	5.0 ± 0.2
Coated	14.8max	8.3min	5.7max

Note: With grass green epoxy coating

Characteristic

GRADE	AL (nH/N^2)	B (mT)	CORE LOSS (W)
	$f=10\text{kHz}$ $U=0.25\text{V}$	$H=250\text{A/m}$ $f=25\text{kHz}$ $T=100^\circ\text{C}$	$f=100\text{kHz}$ $B=200\text{mT}$ $T=100^\circ\text{C}$
DMR40	$1010 \pm 25\%$	≥ 315	≤ 0.286
DMR95	$1500 \pm 25\%$	≥ 315	≤ 0.209

Characteristic

GRADE	AL (nH/N^2)	μ_i
	$f=10\text{kHz}$ $U=0.25\text{V}$	$f=10\text{kHz}$ $U=0.25\text{V}$
R4K	$1900 \pm 30\%$	≈ 4300
R6K	$2650 \pm 30\%$	≈ 6000
R7K	$2970 \pm 30\%$	≈ 7000
R10K	$4420 \pm 30\%$	≈ 10000