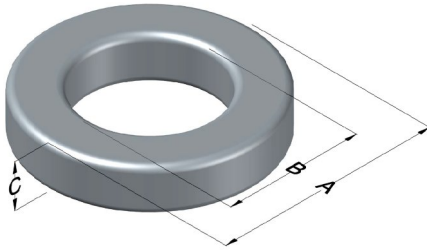




0077736A7

110 Delta Drive
 Pittsburgh, PA 15238
 NAFTA Sales: (1)800-245-3984
 HK Sales : (852)3102-9337
 magnetics@spang.com
 www.mag-inc.com



| Kool M μ Permeability (μ) | A _L (nH/T ²) | Core Marking | | | Coating Color |
|---|--|---------------|----------------|---------------------|------------------|
| | | Lot Number | Part Number | Inductance Grade | |
| 40 | 136 ± 8% | XXXXXX | 77736A7 | N/A | Black |

| Dimensions | Uncoated | | Coated Limits | | | Packaging Cardboard cut-outs Box Qty= 20 pcs |
|------------|----------|-------|---------------|-------|-----|--|
| | (mm) | (in) | (mm) | (in) | | |
| OD (A) | 74.10 | 2.917 | 75.01 | 2.953 | max | |
| ID (B) | 45.30 | 1.783 | 44.39 | 1.748 | min | |
| HT (C) | 35.00 | 1.378 | 35.92 | 1.414 | max | |

| Electrical Characteristics | | | Physical Characteristics | | | | | | |
|---|-------------------------|-------|--|-------------------------------|---|---|---------------------------------------|---|---------------|
| Watt Loss @ 100 kHz, 50mT Max (mW/cm ³) | DC Bias min (A-T/cm) | | Voltage Breakdown wire to wire min (V _{AC}) | Break Strength min (kg) | Window Area W _A (mm ²) | Cross Section A _e (mm ²) | Path Length L _e (mm) | Volume V _e (mm ³) | Weight (g) |
| | 300 | 80% | | | | | | | |
| | 49.7 | 112.1 | | | | | | | |

| Winding Information | | | | Temperature Rating | |
|-------------------------|------|-------------------|------|--|--------|
| Winding Length Per Turn | | | | Wound Coil Dimensions (mm) | |
| Winding Factor | (mm) | Winding Factor | (mm) | Maximum OD (70%) | 102 |
| | | | | Maximum HT (70%) | 65.7 |
| 0% | 102 | 40% | 125 | Surface Area (mm ²) | |
| 20% | 114 | 45% | 129 | | |
| 25% | 117 | 50% | 132 | | |
| 30% | 119 | 60% | 139 | | |
| 35% | 122 | 70% | 147 | | |
| | | | | Unwound Core | 18,800 |
| | | | | 40% Winding Factor | 27,100 |
| | | | | Curie Temp: 500°C | |
| | | | | Coating Temp (Continuous up to): 200°C | |
| | | | | Notes: | |

