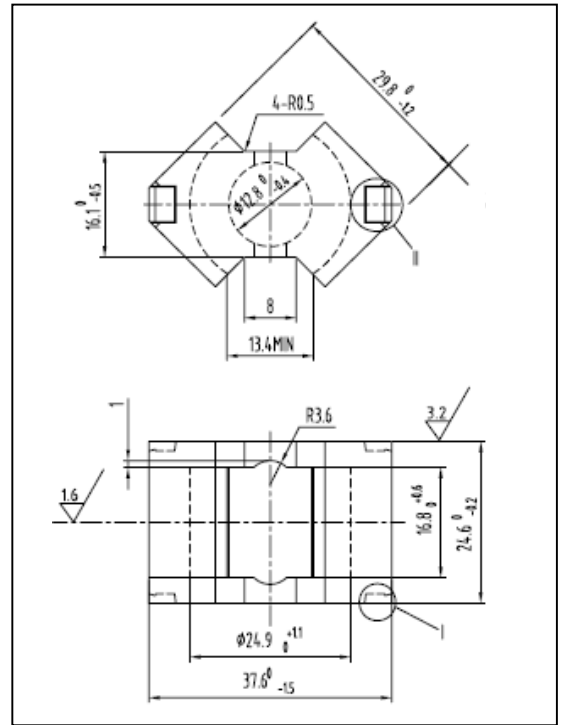


CORE SETS

Effective core parameters

SYMBOL	PARAMETER	VALUE	UNIT
$\Sigma (l/A)$	core factor (C_1)	0.39	mm^{-1}
V_e	effective volume	8322.0	mm^3
l_e	effective length	57.0	mm
A_e	effective area	146.0	mm^2
A_{\min}	minimum area	125.0	mm^2
W_t	mass of core set	≈ 47.7	g



Characteristic

GRADE	AL (nH/N ²)	B (mT)	CORE LOSS (W)
	f=10kHz U=0.25V	H=250A/m f=25kHz T=100°C	f=100kHz B=200mT T=100°C
DMR24	5000 ± 25%	≥ 325	≤ 6.68
DMR40	5200 ± 25%	≥ 315	≤ 6.68
DMR44	5200 ± 25%	≥ 315	≤ 5.72
DMR47	5400 ± 25%	≥ 325	≤ 4.77
DMR90	5000 ± 25%	≥ 325	≤ 4.83
DMR95	6800 ± 25%	≥ 315	≤ 4.58

GRADE	AL (nH/N ²)	B (mT)	CORE LOSS (W)
	f=10kHz U=0.25V	H=250A/m f=25kHz T=100°C	f=500kHz B=50mT T=100°C
DMR50	3500 ± 25%	≥ 300	≤ 1.50
DMR55	5000 ± 25%	≥ 300	≤ 2.67

GRADE	AL (nH/N ²)	μ_i
	f=10kHz U=0.25V	f=10kHz U=0.25V
R7K	≥ 7500	≈ 7000