



Product information

Single-phase high performance filter-DEB1

Description

Small size, easy to install, using the terminal station connection mode, can be customized link mode, bipolar design of high-performance filtering, strong anti-interference characteristics, and a wide range of uses.

Technical Data

Rated Voltage	115/250VAC
Line Frequency	50/60Hz
Test Voltage	1500VDC (line/line) 2150VAC (line/ground)
Insulation Resistance	>50M @500VDC
Temperature Rise	<30
Climatic Category	25/085/21
Housing Material	Nickel-plated iron

Approval & Compliance



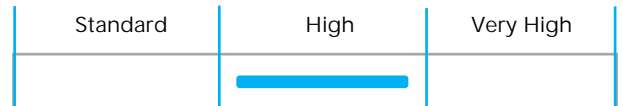
Features

- Rated current : 1A-6A
- Power line link
- Two-stage filter design
- Can be customized upon request

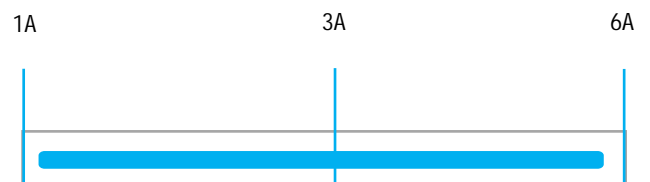
Applications

- Electric power system
- Drive system
- PLC control system
- Servo system
- Small industrial equipment, etc

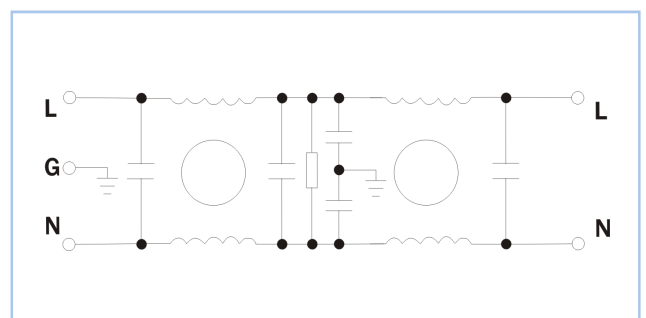
Performance Indicator



Rated Current [A]

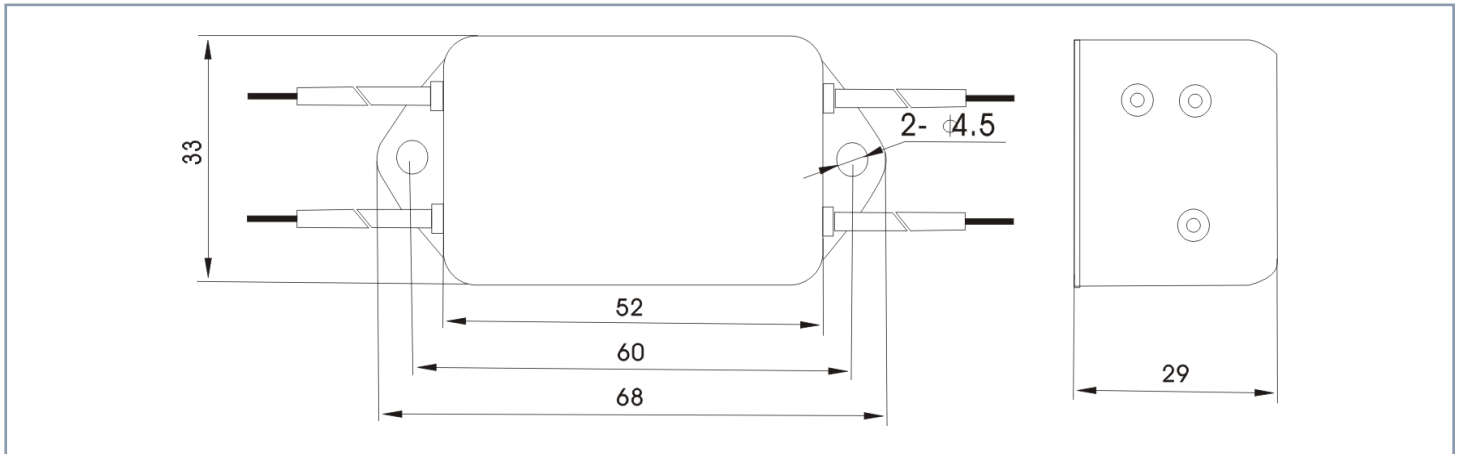


Typical Circuit Diagram



Part No	Rated Current	Rated Current	Case Type	Termination		Safety Certification	Remark
				Input	Output		
DEB1-1A	1A	<2.0mA	B1	Line	Line	CE CQC、ROHS	Parameter customization
DEB1-3A	3A	<2.0mA	B1	Line	Line		
DEB1-6A	6A	<2.0mA	B1	Line	Line		

Overall Dimension (±1mm)



Insertion loss -(common mode)

