



Product information

Single-phase high performance filter-DEA5

Description

Small size, easy to install, bolt connection, customizable, strong anti-interference characteristics, bipolar design of high-performance filtering, and a wide range of uses.

Technical Data

Rated Voltage	115/250VAC
Line Frequency	50/60Hz
Test Voltage	1500VDC (line/line) 2150VAC (line/ground)
Insulation Resistance	>50M @500VDC
Temperature Rise	<30
Climatic Category	25/085/21
Housing Material	Nickel-plated iron

Approval & Compliance



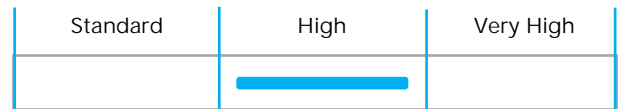
Features

- Rated current : 20A-30A
- Bolted connection
- Two-stage filter design
- Can be customized upon request

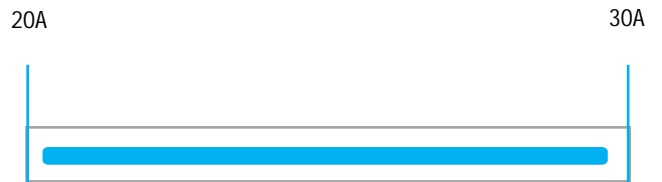
Applications

- Electrical appliances, testing equipment
- Electronic equipment
- Various disinfection and purification equipment
- Laser cutting equipment
- Autonomous robots and so on

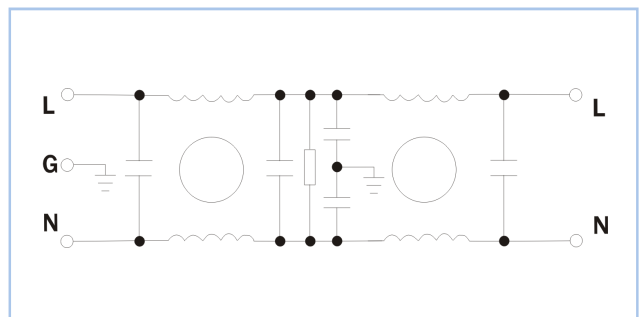
Performance Indicator



Rated Current [A]

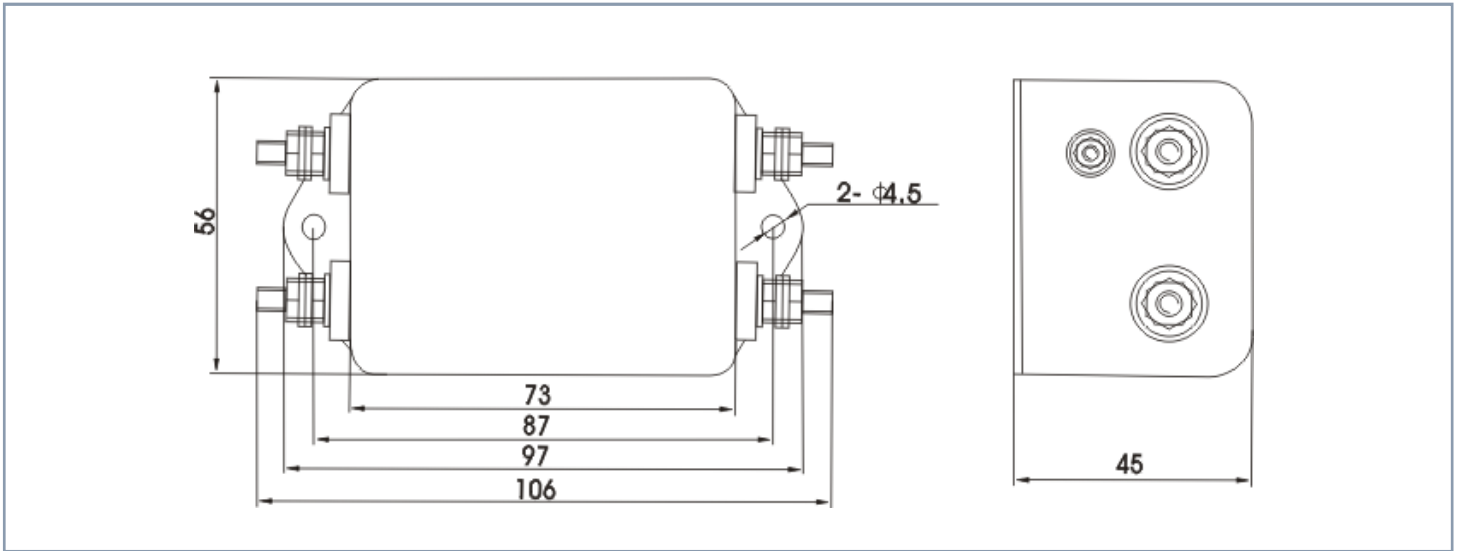


Typical Circuit Diagram



Part No	Rated Current	Rated Current	Case Type	Termination		Safety Certification	Remark
				Input	Output		
DEA5-20A	20A	<2.0mA	A5	Bolts	Bolts	CUL、CE CQC、ROHS	Parameter customization
DEA5-30A	30A	<2.0mA	A5	Bolts	Bolts		

Overall Dimension (±1mm)



Insertion loss -(common mode)

