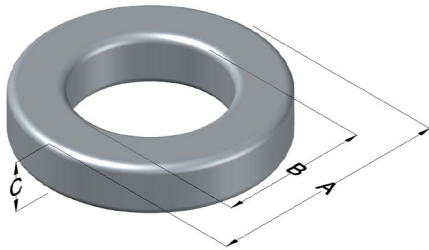




**0077734A7**

110 Delta Drive  
 Pittsburgh, PA 15238  
 NAFTA Sales: (1)800-245-3984  
 HK Sales : (852)3102-9337  
 magnetics@spang.com  
 www.mag-inc.com



Kool M $\mu$ Permeability ( $\mu$ )	A <sub>L</sub> (nH/T <sup>2</sup> )	Core Marking			Coating Color
		Lot Number	Part Number	Inductance Grade	
14	48 ± 8%	XXXXXX	77734A7	N/A	Black

Dimensions	Uncoated		Coated Limits		Packaging
	(mm)	(in)	(mm)	(in)	
OD (A)	74.10	2.917	75.01	2.953	Cardboard cut-outs Box Qty= 20 pcs
ID (B)	45.30	1.783	44.39	1.748	
HT (C)	35.00	1.378	35.92	1.414	

Electrical Characteristics			Physical Characteristics						
Watt Loss @ 100 kHz, 50 mT Max (mW/cm <sup>3</sup> )	DC Bias min (A-T/cm)		Voltage Breakdown wire to wire min (V <sub>AC</sub> )	Break Strength min (kg)	Window Area W <sub>A</sub> (mm <sup>2</sup> )	Cross Section A <sub>e</sub> (mm <sup>2</sup> )	Path Length L <sub>e</sub> (mm)	Volume V <sub>e</sub> (mm <sup>3</sup> )	Weight (g)
	650	80%							
	178.9	234.5	1000	113	1,550	497	184	91,400	460

Winding Information				Temperature Rating	
Winding Length Per Turn				Wound Coil Dimensions (mm)	
Winding Factor	(mm)	Winding Factor	(mm)	Curie Temp: 500°C	
				Coating Temp (Continuous up to): 200°C	
				Notes:	
0%	102	40%	125	Maximum OD (70%)	102
20%	114	45%	129	Maximum HT (70%)	65.7
25%	117	50%	132	Surface Area (mm <sup>2</sup> )	
30%	119	60%	139	Unwound Core	18,800
35%	122	70%	147	40% Winding Factor	27,100

