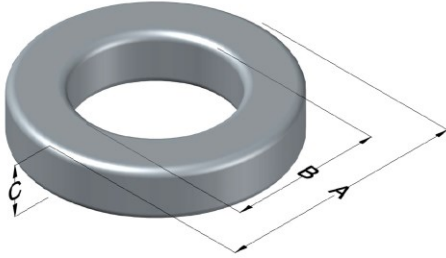




0077098A7

110 Delta Drive
 Pittsburgh, PA 15238
 NAFTA Sales: (1)800-245-3984
 HK Sales : (852)3102-9337
 magnetics@spang.com
 www.mag-inc.com



Kool M μ Permeability (μ)	A _L (nH/T ²)	Core Marking			Coating Color
		Lot Number	Part Number	Inductance Grade	
125	232 ± 8%	XXXXXX	77098A7	N/A	Black

Dimensions	Uncoated		Coated Limits			Packaging
	(mm)	(in)	(mm)	(in)		
OD (A)	101.6	4.000	103.0	4.055	max	Cardboard cut-outs Box Qty= 25 pcs
ID (B)	57.20	2.252	55.75	2.195	min	
HT (C)	16.5	0.650	17.9	0.705	max	

Electrical Characteristics			Physical Characteristics						
Watt Loss @ 100 kHz, 100mT Max (mW/cm ³)	DC Bias min (A-T/cm)		Voltage Breakdown wire to wire min (V _{AC})	Break Strength min (kg)	Window Area W _A (mm ²)	Cross Section A _e (mm ²)	Path Length L _e (mm)	Volume V _e (mm ³)	Weight (g)
	1400	80% 11							

Winding Information				Temperature Rating	
Winding Length Per Turn				Wound Coil Dimensions (mm)	
Winding Factor	(mm)	Winding Factor	(mm)	Curie Temp: 500°C	
				Coating Temp (Continuous up to): 200°C	
0%	82.2	40%	111	Notes:	
20%	96.8	45%	116		
25%	100	50%	120	Maximum OD (70%) 136 Maximum HT (70%) 55.1 Surface Area (mm ²) Unwound Core 20,700 40% Winding Factor 34,600	
30%	103	60%	128		
35%	108	70%	139		

