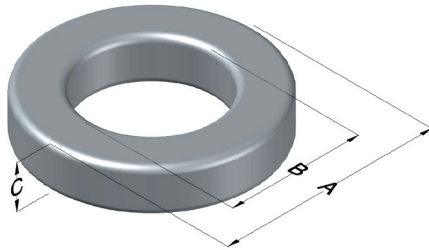




**0077717A7**

110 Delta Drive  
 Pittsburgh, PA 15238  
 NAFTA Sales: (1)800-245-3984  
 HK Sales : (852)3102-9337  
 magnetics@spang.com  
 www.mag-inc.com



Kool M $\mu$ Permeability ( $\mu$ )	A <sub>L</sub> (nH/T <sup>2</sup> )	Core Marking			Coating Color
		Lot Number	Part Number	Inductance Grade	
26	32 ± 8%	XXXXXX	77717A7	N/A	Black

Dimensions	Uncoated		Coated Limits		Packaging
	(mm)	(in)	(mm)	(in)	
OD (A)	50.80	2.000	51.69	2.035	Cardboard cut-outs Box Qty= 90 pcs
ID (B)	31.80	1.250	30.93	1.218	
HT (C)	13.5	0.530	14.4	0.565	

Electrical Characteristics			Physical Characteristics						
Watt Loss @ 100 kHz, 100mT max(mW/cm <sup>3</sup> )	DC Bias min (A·T/cm)		Voltage Breakdown wire to wire min (V <sub>AC</sub> )	Break Strength min (kg)	Window Area W <sub>A</sub> (mm <sup>2</sup> )	Cross Section A <sub>e</sub> (mm <sup>2</sup> )	Path Length L <sub>e</sub> (mm)	Volume V <sub>e</sub> (mm <sup>3</sup> )	Weight (g)
	80%	50%							
1150	75.5	162	1000	93	751	125	127	15,900	84

Winding Information					Temperature Rating	
Winding Length Per Turn				Wound Coil Dimensions (mm)		Curie Temp: 500°C
Winding Factor	(mm)	Winding Factor	(mm)	Maximum OD (70%)	72.4	Coating Temp (Continuous up to): 200°C
				Maximum HT (70%)	40.6	
0%	49.5	40%	65.5	Surface Area (mm <sup>2</sup> )		Notes:
20%	57.4	45%	67.7	Unwound Core		
25%	59.6	50%	70.1	40% Winding Factor		
30%	61.0	60%	74.9			
35%	63.5	70%	80.3			

