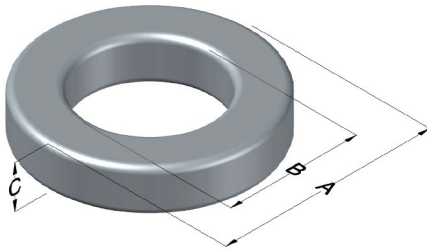




C055438A2

110 Delta Drive
 Pittsburgh, PA 15238
 NAFTA Sales: (1)800-245-3984
 HK Sales : (852)3102-9337
 magnetics@spang.com
 www.mag-inc.com



MPP Permeability (μ)	A_L (nH/T ²)	Core Marking			Coating Color
		Lot Number	Part Number	Inductance Grade	
125	281 \pm 8%	XXXXXX	55438A2	X	Gray

Dimensions	Uncoated		Coated Limits			Packaging
	(mm)	(in)	(mm)	(in)		
OD (A)	46.70	1.840	47.63	1.875	max	Cardboard cut-outs Box Qty= 105 pcs
ID (B)	24.1	0.950	23.3	0.918	min	
HT (C)	18.0	0.710	19.0	0.745	max	

Electrical Characteristics			Physical Characteristics						
Watt Loss @ 100 kHz, 100mT max(mW/cm ³)	DC Bias min (A-T/cm)		Voltage Breakdown wire to wire min (V _{AC})	Break Strength min (kg)	Window Area W _A (mm ²)	Cross Section A _e (mm ²)	Path Length L _e (mm)	Volume V _e (mm ³)	Weight (g)
	80%	50%							
950	19.8	38.5	1000	113	427	199	107	21,300	180

Winding Information					Temperature Rating	
Winding Length Per Turn				Wound Coil Dimensions (mm)		Curie Temp: 460 °C
Winding Factor	(mm)	Winding Factor	(mm)	Maximum OD (70%)	63.8	Coating Temp (Continuous up to): 200 °C
				Maximum HT (70%)	38.7	
0%	62.1	40%	74.1	Surface Area (mm ²)		Notes:
20%	68.2	45%	76.0	Unwound Core		
25%	69.7	50%	77.6	40% Winding Factor		
30%	70.9	60%	81.2			
35%	72.7	70%	85.4			

Typical DC Bias Performance

