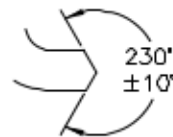
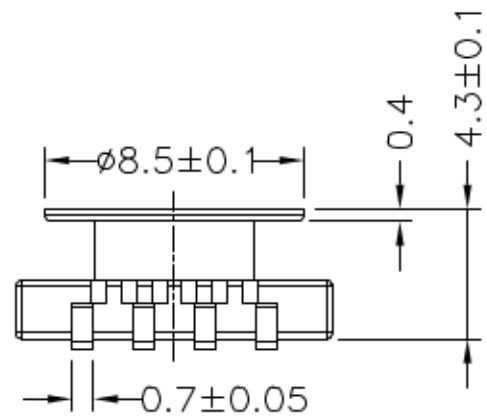
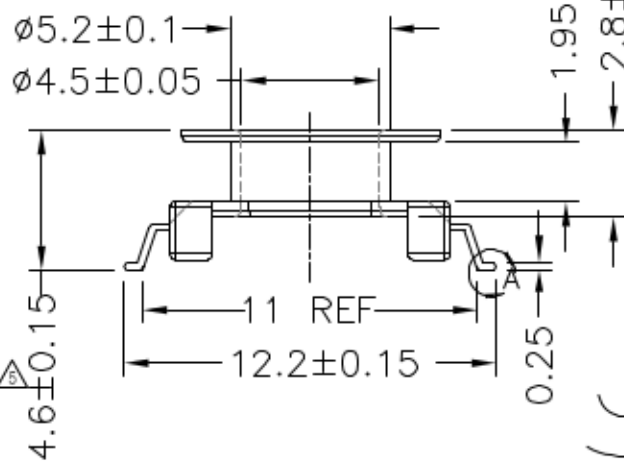
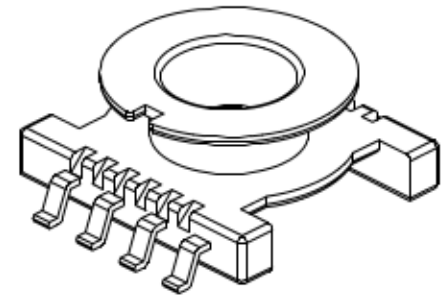
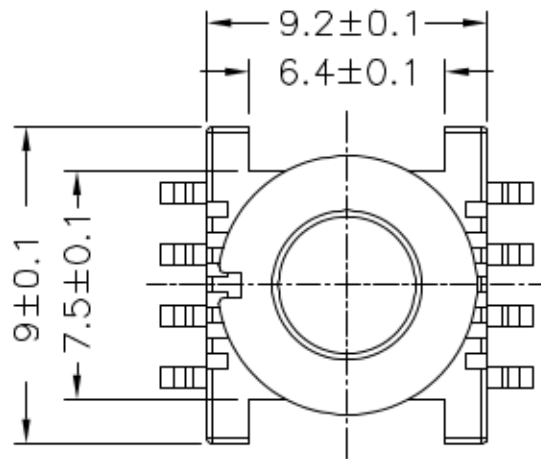


LEPCOS (North-West Laboratory)

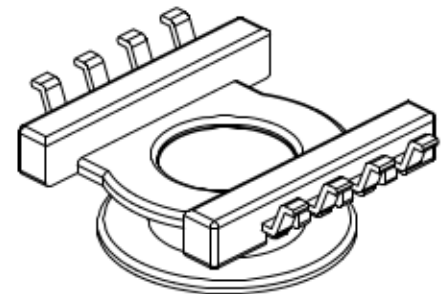
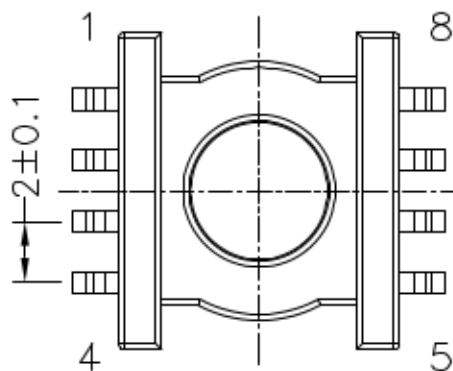
http://ferrite.ru Tel/fax +7-812-369-11-54
St-Petersburg, Russia

REVISIONS

REV	SYM	DRAFTER	CHECKER	DATE
3		T.S.LII	W.H.HSU	11/22/05
4		T.S.LII	W.H.HSU	07/24/06
5		Y.G.HSU	W.H.HSU	04/14/07



DETAIL:A
PATENTED



DWG NO. ER11/5-8P-GW-2.0-B-1

PART NO.	MATERIAL (BOBBIN)	MATERIAL (TERMINAL)	TERMINAL (PLATING)	PIN ALLOCATION	NOTE
TBI-104-01021.103	PM-9630	P.B	Sn	ALL PIN	
TBI-104-01021.113	PM-9630	P.B	Sn	CUT PIN# 2,3,6,7	

TOLERANCE: .X±0.15 .XX±0.10 .XXX±0.05 UNIT : m/m SCALE 4 : 1

Finish: 1. Pb wire Immersion Sn on terminal : Thickness:Sn plating,100,5 μm (200 μ inches) min,Base nickel 0.625 μm (25 μ inches) min.

2. CP wire Immersion Sn on terminal : Thickness:Sn plating,100,5 μm (200 μ inches) min.

3. Coplanarity deviation: 0.10 mm (0.004 inches) max.

REV 5