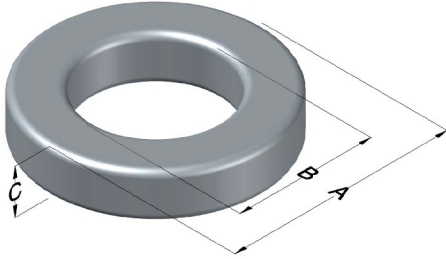




0077885A7

110 Delta Drive
 Pittsburgh, PA 15238
 NAFTA Sales: (1)800-245-3984
 HK Sales : (852)3102-9337
 magnetics@spang.com
 www.mag-inc.com



Kool M μ Permeability (μ)	A _L (nH/T ²)	Core Marking			Coating Color
		Lot Number	Part Number	Inductance Grade	
75	32 ± 12%	XXXXXX	885A7	N/A	Black

Dimensions	Uncoated		Coated Limits			Packaging
	(mm)	(in)	(mm)	(in)		
OD (A)	9.65	0.380	10.3	0.405	max	Bulk Pack 4 bags/box Box Qty= 8000 pcs
ID (B)	4.78	0.188	4.26	0.168	min	
HT (C)	3.18	0.125	3.81	0.150	max	

Electrical Characteristics			Physical Characteristics						
Watt Loss @ 100 kHz, 100mT max(mW/cm ³)	DC Bias min (A-T/cm)		Voltage Breakdown wire to wire min (V _{AC})	Break Strength min (kg)	Window Area W _A (mm ²)	Cross Section A _e (mm ²)	Path Length L _e (mm)	Volume V _e (mm ³)	Weight (g)
	1000	80%							
	20.2	50.8							

Winding Information					Temperature Rating	
Winding Length Per Turn				Wound Coil Dimensions (mm)		Curie Temp: 500°C
Winding Factor	(mm)	Winding Factor	(mm)	Maximum OD (70%)	13.4	Coating Temp (Continuous up to): 200°C
				Maximum HT (70%)	7.44	
0%	13.6	40%	15.9	Surface Area (mm ²)		Notes:
20%	14.7	45%	16.2	Unwound Core		
25%	15.0	50%	16.5	40% Winding Factor		
30%	15.3	60%	17.2			
35%	15.6	70%	17.9			

