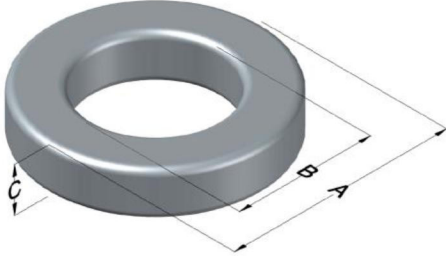




**0077030AY**

110 Delta Drive  
 Pittsburgh, PA 15238  
 NAFTA Sales: (1)800-245-3984  
 HK Sales : (852)3102-9337  
 magnetics@spang.com  
 www.mag-inc.com



Kool M $\mu$ Permeability ( $\mu$ )	A <sub>L</sub> (nH/T <sup>2</sup> )	Core Marking			Coating Color
		Lot Number	Part Number	Inductance Grade	
125	52 ± 12%	N/A	N/A	N/A	Clear

Dimensions	Uncoated		Coated Limits			Packaging
	(mm)	(in)	(mm)	(in)		
OD (A)	7.87	0.310	8.33	0.328	max	Bulk Pack 4 bags/box Box Qty= 10,000 pcs
ID (B)	3.96	0.156	3.63	0.143	min	
HT (C)	3.18	0.125	3.64	0.143	max	

Electrical Characteristics			Physical Characteristics						
Watt Loss @ 100 kHz, 100mT max(mW/cm <sup>3</sup> )	DC Bias min (oersteds)		Voltage Breakdown wire to wire min (V <sub>AC</sub> )	Break Strength min (kg)	Window Area W <sub>A</sub> (mm <sup>2</sup> )	Cross Section A <sub>e</sub> (mm <sup>2</sup> )	Path Length L <sub>e</sub> (mm)	Volume V <sub>e</sub> (mm <sup>3</sup> )	Weight (g)
	750	80%							
	14.0	35.0							

Winding Information					Temperature Rating			
Winding Length Per Turn				Wound Coil Dimensions (mm)			Curie Temp: 500°C	
Winding Factor	(mm)	Winding Factor	(mm)	40% Winding Factor	OD	9.07		
					HT	4.93		
0%	12.7	40%	14.5	Completely Full Window	Max OD	11.0		
20%	13.6	45%	14.7		Max HT	6.73		
25%	13.8	50%	15.0	Surface Area (mm <sup>2</sup> )				Notes:  Parylene coated, color appears clear to milky white.
30%	14.0	60%	15.5	Unwound Core		240		
35%	14.3	70%	16.1	40% Winding Factor		310		

