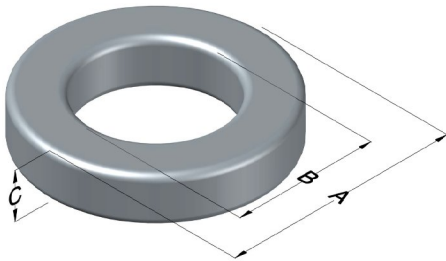




**0077254A7**

110 Delta Drive  
 Pittsburgh, PA 15238  
 NAFTA Sales: (1)800-245-3984  
 HK Sales : (852)3102-9337  
 magnetics@spang.com  
 www.mag-inc.com



Kool M $\mu$ Permeability ( $\mu$ )	A <sub>L</sub> (nH/T <sup>2</sup> )	Core Marking			Coating Color
		Lot Number	Part Number	Inductance Grade	
125	168 ± 8%	XXXXXX	77254A7	N/A	Black

Dimensions	Uncoated		Coated Limits		Packaging
	(mm)	(in)	(mm)	(in)	
OD (A)	39.90	1.570	40.77	1.605	Cardboard cut-outs Box Qty= 180 pcs
ID (B)	24.1	0.950	23.3	0.918	
HT (C)	14.5	0.570	15.4	0.605	

Electrical Characteristics			Physical Characteristics						
Watt Loss @ 100 kHz, 100mT max(mW/cm <sup>3</sup> )	DC Bias min (A·T/cm)		Voltage Breakdown wire to wire min (V <sub>AC</sub> )	Break Strength min (kg)	Window Area W <sub>A</sub> (mm <sup>2</sup> )	Cross Section A <sub>e</sub> (mm <sup>2</sup> )	Path Length L <sub>e</sub> (mm)	Volume V <sub>e</sub> (mm <sup>3</sup> )	Weight (g)
	1400	80%							
	10.7	27.8							

Winding Information					Temperature Rating	
Winding Length Per Turn				Wound Coil Dimensions (mm)		Curie Temp: 500°C
Winding Factor	(mm)	Winding Factor	(mm)	Maximum OD (70%)	56.4	Coating Temp (Continuous up to): 200°C
				Maximum HT (70%)	35.2	
0%	48.2	40%	60.2	Surface Area (mm <sup>2</sup> )		Notes:
20%	54.3	45%	62.1	Unwound Core		
25%	55.8	50%	63.7	40% Winding Factor		
30%	57.0	60%	67.3			
35%	58.8	70%	71.5			

