



Product information

EMI Single-phase universal filter-DBA4

Description

Small size, easy to install, is a general filter, the use of insert link can be customized, with strong anti-interference, relatively stable performance, a wide range of features.

Technical Data

Rated Voltage	115/250VAC
Line Frequency	50/60Hz
Test Voltage	1500VDC (line/line) 2150VAC (line/ground)
Insulation Resistance	>50M @500VDC
Temperature Rise	<30
Climatic Category	25/085/21
Housing Material	Nickel-plated iron

Approval & Compliance



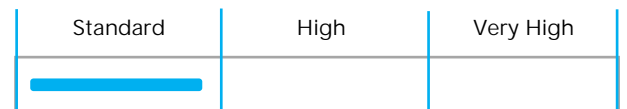
Features

- Rated current : 10A-30A
- Universal filter
- Relatively stable performance
- Can be customized upon request

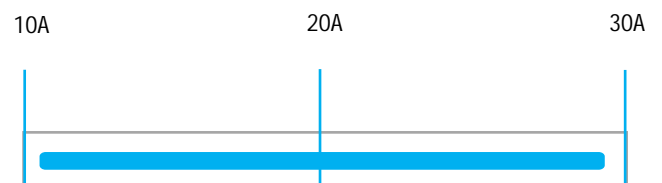
Applications

- Electrical appliances, testing equipment
- Medical equipment
- Grid control system
- Laser cutting equipment
- City security monitoring system and so on

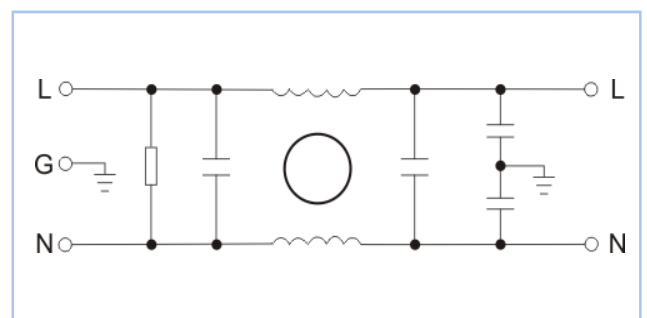
Performance Indicator



Rated Current [A]

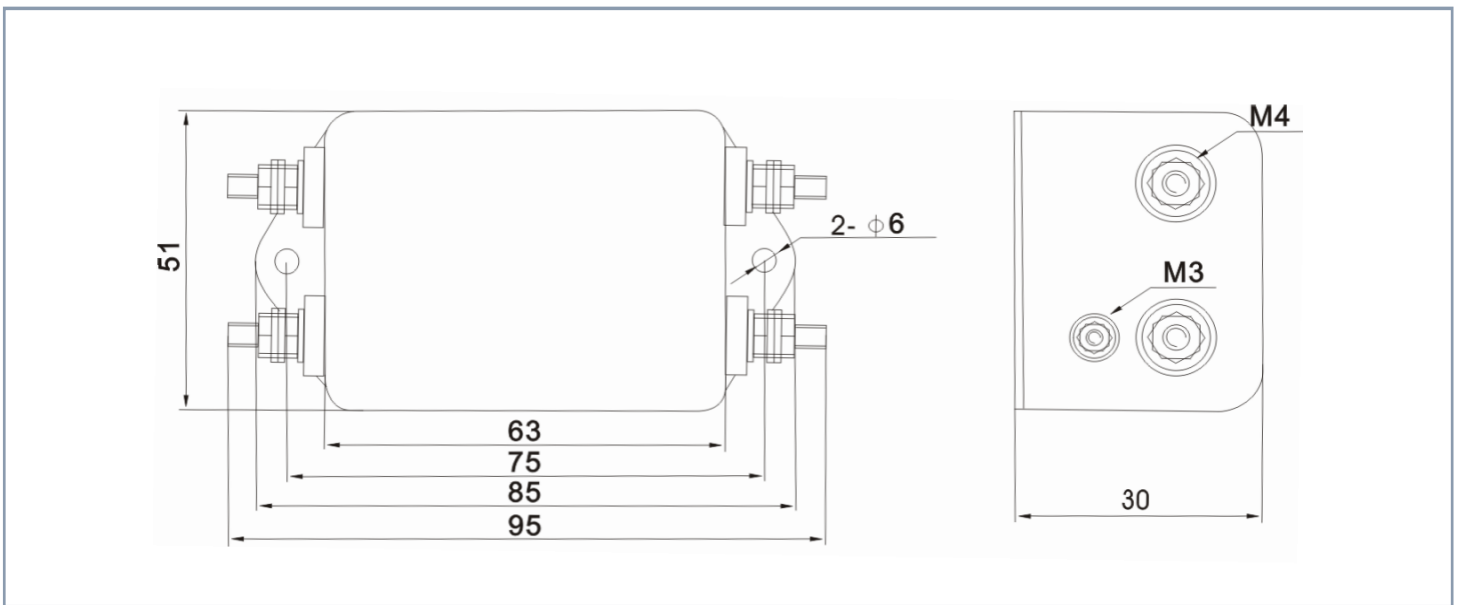


Typical Circuit Diagram



Part No	Rated Current	Rated Current	Case Type	Termination		Safety Certification	Remark
				Input	Output		
DBA4-10A	10A	<0.5mA	A4	Bolts/Lnserts	Bolts/Lnserts	CUL、CE CQC、ROHS	Parameter customization
DBA4-20A	20A	<0.5mA	A4	Bolts/Lnserts	Bolts/Lnserts		
DBA4-30A	30A	<0.5mA	A4	Bolts/Lnserts	Bolts/Lnserts		

Overall Dimension (±1mm)



Insertion loss -(common mode)

