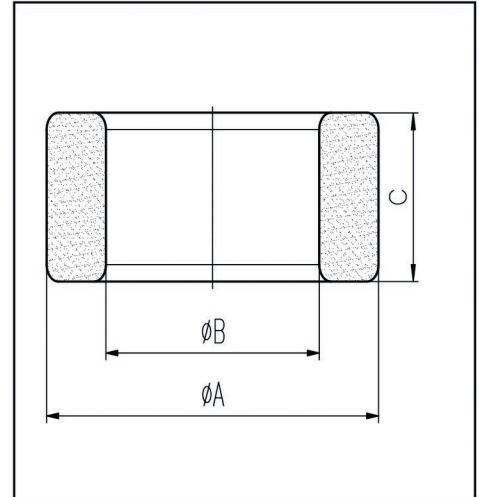


H cores

CORE SETS

Effective core parameters

SYMBOL	PARAMETER	VALUE	UNIT
$\Sigma (1/A)$	core factor (C_1)	0.76	mm^{-1}
V_e	effective volume	19803.00	mm^3
l_e	effective length	123.00	mm
A_e	effective area	161.00	mm^2
W_t	mass of core	≈ 99.5	g



尺寸 Coat	A	B	C
	Uncoat	49.0 ± 0.8	31.8 ± 0.6
Coated	50.2max	30.8min	20.0max

Note: With grass green epoxy coating

Characteristic

GRADE	AL (nH/N ²)	μ_i
	f=10kHz U=0.25V	f=10kHz U=0.25V
R5K	$8210 \pm 25\%$	≈ 5000
R7K	$11000 \pm 25\%$	≈ 7000
R10K	$15500 \pm 30\%$	≈ 10000
R12K	≥ 12400	≈ 12000